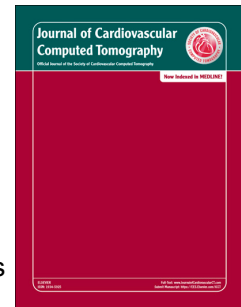


Accepted Manuscript

In vivo coronary lesion differentiation with computed tomography angiography and intravascular ultrasound as compared to optical coherence tomography

Wouter G. Wieringa, Chris P.H. Lexis, Erik Lipsic, Hindrik W. van der Werf, Johannes G.M. Burgerhof, Vincent E. Hagens, G. Louis Bartels, Alexander Broersen, Remco A. Schurer, Eng-Shiong Tan, Pim van der Harst, Ad F.M. van den Heuvel, Tineke P. Willems, Gabija Pundziute



PII: S1934-5925(17)30020-5

DOI: [10.1016/j.jcct.2017.01.004](https://doi.org/10.1016/j.jcct.2017.01.004)

Reference: JCCT 952

To appear in: *Journal of Cardiovascular Computed Tomography*

Received Date: 24 November 2014

Revised Date: 20 December 2016

Accepted Date: 14 January 2017

Please cite this article as: Wieringa WG, Lexis CPH, Lipsic E, van der Werf HW, Burgerhof JGM, Hagens VE, Bartels GL, Broersen A, Schurer RA, Tan E-S, van der Harst P, van den Heuvel AFM, Willems TP, Pundziute G, In vivo coronary lesion differentiation with computed tomography angiography and intravascular ultrasound as compared to optical coherence tomography, *Journal of Cardiovascular Computed Tomography* (2017), doi: 10.1016/j.jcct.2017.01.004.

This is a PDF file of an unedited manuscript that has been accepted for publication. As a service to our customers we are providing this early version of the manuscript. The manuscript will undergo copyediting, typesetting, and review of the resulting proof before it is published in its final form. Please note that during the production process errors may be discovered which could affect the content, and all legal disclaimers that apply to the journal pertain.

In Vivo Coronary Lesion Differentiation with Computed Tomography Angiography and Intravascular Ultrasound as Compared to Optical Coherence Tomography

Wouter G Wieringa MD¹, Chris PH Lexis MD¹, Erik Lipsic MD PhD¹, Hindrik W van der Werf MD¹, Johannes GM Burgerhof MSc⁴, Vincent E Hagens MD PhD⁵, G Louis Bartels MD PhD⁶, Alexander Broersen PhD³, Remco A Schurer MD¹, Eng-Shiong Tan MD PhD¹, Pim van der Harst MD PhD¹, Ad FM van den Heuvel MD PhD¹, Tineke P Willems MD PhD², Gabija Pundziute MD PhD¹

¹University of Groningen, University Medical Center Groningen, Thorax Center, Department of Cardiology, Groningen, The Netherlands;

²University of Groningen, University Medical Center Groningen, Department of Radiology, Groningen, The Netherlands;

³University of Leiden, Leiden University Medical Center, Department of Radiology, Division of Image Processing, Leiden, The Netherlands;

⁴University of Groningen, University Medical Center Groningen, Department of Epidemiology, Groningen, The Netherlands;

⁵Ommelander Group, Delfzicht Hospital, Department of Cardiology, The Netherlands

⁶Martini Hospital, Department of Cardiology, Groningen, The Netherlands

Address for correspondence:

G Pundziute;
Thorax Center, Department of Cardiology
University Medical Center Groningen
Hanzeplein 1 PO Box 30001
9700 RP Groningen, The Netherlands
Tel: +31 50 3612355 | Fax: +31 50 3612355 | Email: g.pundziute@umcg.nl

Manuscript type: Original research

Word count: 5143

Download English Version:

<https://daneshyari.com/en/article/5615002>

Download Persian Version:

<https://daneshyari.com/article/5615002>

[Daneshyari.com](https://daneshyari.com)