

Accepted Manuscript

Mid-diastolic left ventricular volume and mass: Normal values for coronary computed tomography angiography

Daniel Juneau, MD, Fernanda Erthal, MD, Owen Clarkin, PhD, Atif Alzahrani, MD, Ali Alenazy, MD, Alomgir Hossain, PhD, Joao R. Inacio, MD, Girish Dwivedi, MD, PhD, Alexander J. Dick, MD, Frank J. Rybicki, MD, PhD, Benjamin J.W. Chow, MD

PII: S1934-5925(17)30026-6

DOI: [10.1016/j.jcct.2017.01.011](https://doi.org/10.1016/j.jcct.2017.01.011)

Reference: JCCT 959

To appear in: *Journal of Cardiovascular Computed Tomography*

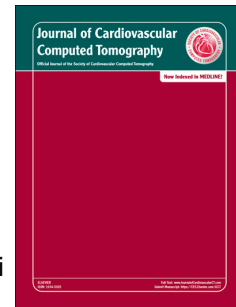
Received Date: 15 January 2017

Revised Date: 24 January 2017

Accepted Date: 29 January 2017

Please cite this article as: Juneau D, Erthal F, Clarkin O, Alzahrani A, Alenazy A, Hossain A, Inacio JR, Dwivedi G, Dick AJ, Rybicki FJ, Chow BJW, Mid-diastolic left ventricular volume and mass: Normal values for coronary computed tomography angiography, *Journal of Cardiovascular Computed Tomography* (2017), doi: 10.1016/j.jcct.2017.01.011.

This is a PDF file of an unedited manuscript that has been accepted for publication. As a service to our customers we are providing this early version of the manuscript. The manuscript will undergo copyediting, typesetting, and review of the resulting proof before it is published in its final form. Please note that during the production process errors may be discovered which could affect the content, and all legal disclaimers that apply to the journal pertain.



Mid-diastolic Left Ventricular Volume and Mass: Normal Values for Coronary Computed Tomography Angiography

Daniel Juneau, MD*†, Fernanda Erthal, MD*, Owen Clarkin, PhD*, Atif Alzahrani, MD*, Ali Alenazy, MD*, Alomgir Hossain, PhD‡, Joao R. Inacio, MD^, Girish Dwivedi, MD, PhD*, Alexander J. Dick, MD*, Frank J. Rybicki, MD, PhD§^, Benjamin J.W. Chow, MD*^

* Department of Medicine (Cardiology), University of Ottawa Heart Institute, Ontario, Canada

† Centre Hospitalier de l'Université de Montréal (CHUM), Montréal, Québec, Canada

‡ Cardiovascular Methods Centre, University of Ottawa Heart Institute, Ontario, Canada

§ The Ottawa Hospital Research Institute, Ontario, Canada

^ Department of Radiology, University of Ottawa Faculty of Medicine, Ontario, Canada

Short Title: Mid-diastolic LV volume and mass using coronary CTA

Correspondence:

Benjamin J.W. Chow, MD

40 Ruskin Street, Ottawa, ON, K1Y 4W7

Telephone: 1-613-761-4044, Fax: 1-613-761-4929

Email: bchow@ottawaheart.ca

Download English Version:

<https://daneshyari.com/en/article/5615005>

Download Persian Version:

<https://daneshyari.com/article/5615005>

[Daneshyari.com](https://daneshyari.com)