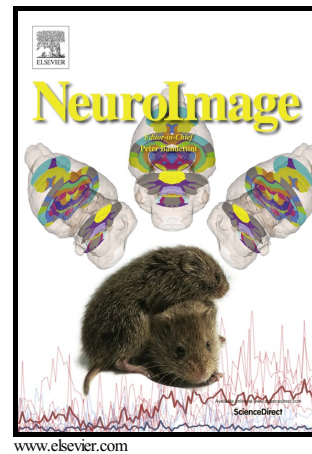


Author's Accepted Manuscript

Creative Constraints: Brain Activity and Network Dynamics Underlying Semantic Interference During Idea Production

Roger E. Beaty, Alexander P. Christensen, Mathias Benedek, Paul J. Silvia, Daniel L. Schacter



PII: S1053-8119(17)30012-5
DOI: <http://dx.doi.org/10.1016/j.neuroimage.2017.01.012>
Reference: YNIMG13716

To appear in: *NeuroImage*

Received date: 20 September 2016
Revised date: 9 December 2016
Accepted date: 6 January 2017

Cite this article as: Roger E. Beaty, Alexander P. Christensen, Mathias Benedek, Paul J. Silvia and Daniel L. Schacter, Creative Constraints: Brain Activity and Network Dynamics Underlying Semantic Interference During Idea Production *NeuroImage*, <http://dx.doi.org/10.1016/j.neuroimage.2017.01.012>

This is a PDF file of an unedited manuscript that has been accepted for publication. As a service to our customers we are providing this early version of the manuscript. The manuscript will undergo copyediting, typesetting, and review of the resulting galley proof before it is published in its final citable form. Please note that during the production process errors may be discovered which could affect the content, and all legal disclaimers that apply to the journal pertain.

Running Head: SEMANTIC INTERFERENCE & IDEA PRODUCTION

Creative Constraints:

Brain Activity and Network Dynamics Underlying Semantic Interference During Idea Production

Roger E. Beaty^{1*}, Alexander P. Christensen^{2*}, Mathias Benedek³, Paul J. Silvia², & Daniel L. Schacter¹

¹Department of Psychology and Center for Brain Science, Harvard University, USA

²Department of Psychology, University of North Carolina at Greensboro, USA

³Department of Psychology, University of Graz, Austria

*authors contributed equally

Author Note

R.E.B, P.J.S., and M.B. were supported by grant RFP-15-12 from the Imagination Institute (www.imagination-institute.org), funded by the John Templeton Foundation. The opinions expressed in this publication are those of the authors and do not necessarily reflect the view of the Imagination Institute or the John Templeton Foundation. D.L.S was supported by National Institute of Mental Health R01 MH060941.

Correspondence should be addressed to Roger Beaty, Department of Psychology, 33 Kirkland St., Cambridge, MA, 02138, USA; rbeaty@fas.harvard.edu.

Download English Version:

<https://daneshyari.com/en/article/5631289>

Download Persian Version:

<https://daneshyari.com/article/5631289>

[Daneshyari.com](https://daneshyari.com)