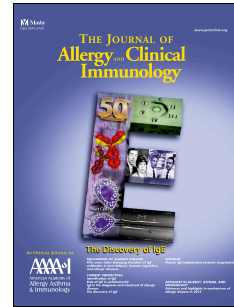


# Accepted Manuscript

Effects of nongenetic factors on immune cell dynamics in early childhood: The Generation R Study

Diana van den Heuvel, PhD, Michelle A.E. Jansen, MD, Kazem Nasserinejad, MSc, Willem A. Dik, PhD, Ellen G. van Lochem, PhD, Liesbeth E. Bakker-Jonges, PhD, Halima Bouallouch-Charif, BSc, Vincent W.V. Jaddoe, MD, PhD, Herbert Hooijkaas, PhD, Jacques J.M. van Dongen, MD, PhD, Henriëtte A. Moll, MD, PhD, Menno C. van Zelm, PhD



PII: S0091-6749(16)31379-3

DOI: [10.1016/j.jaci.2016.10.023](https://doi.org/10.1016/j.jaci.2016.10.023)

Reference: YMAI 12477

To appear in: *Journal of Allergy and Clinical Immunology*

Received Date: 17 April 2016

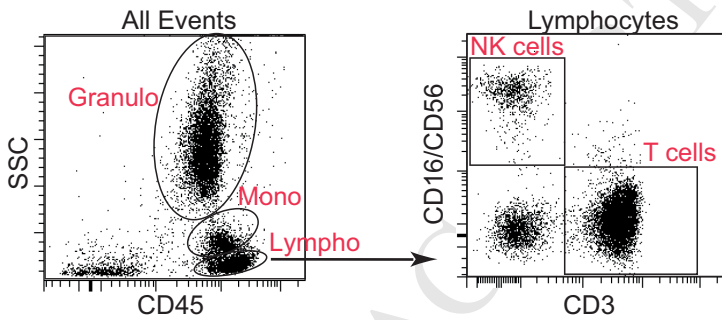
Revised Date: 29 August 2016

Accepted Date: 5 October 2016

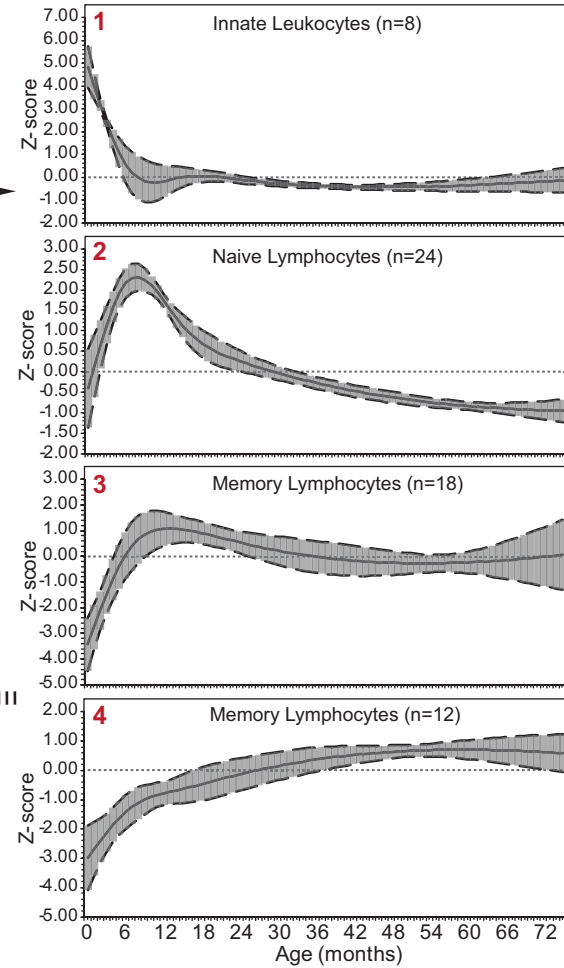
Please cite this article as: van den Heuvel D, Jansen MAE, Nasserinejad K, Dik WA, van Lochem EG, Bakker-Jonges LE, Bouallouch-Charif H, Jaddoe VWV, Hooijkaas H, van Dongen JJM, Moll HA, van Zelm MC, Effects of nongenetic factors on immune cell dynamics in early childhood: The Generation R Study, *Journal of Allergy and Clinical Immunology* (2016), doi: 10.1016/j.jaci.2016.10.023.

This is a PDF file of an unedited manuscript that has been accepted for publication. As a service to our customers we are providing this early version of the manuscript. The manuscript will undergo copyediting, typesetting, and review of the resulting proof before it is published in its final form. Please note that during the production process errors may be discovered which could affect the content, and all legal disclaimers that apply to the journal pertain.

## Immunophenotyping of Children Aged 0 - 6 Years



## Kinetics Profiles of 62 Leukocyte Subsets



## Effects of Nongenetic Determinants on Leukocyte Kinetics

## 62 Leukocyte Populations

## 26 Nongenetic Determinants

	Granulocytes	Monocytes	NK cells	B cells	CD4+ T cells	CD8+ T cells	
				Naive	Mem	Naive	Mem
Maternal Life Style (n=6)	Decrease	Decrease			Decrease		
Maternal Immune-mediated Diseases (n=3)							
Birth Characteristics (n=6)	Increase				Increase		
Bacterial/Viral Exposure (n=11)		Increase	Distinct effects	Decrease	Decrease		Increase

Legend: Increase (Red), Decrease, or Distinct effects of various determinants in the indicated category (Blue).

Download English Version:

<https://daneshyari.com/en/article/5646550>

Download Persian Version:

<https://daneshyari.com/article/5646550>

[Daneshyari.com](https://daneshyari.com)