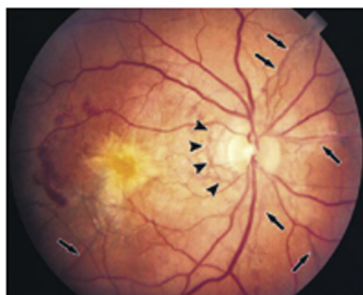




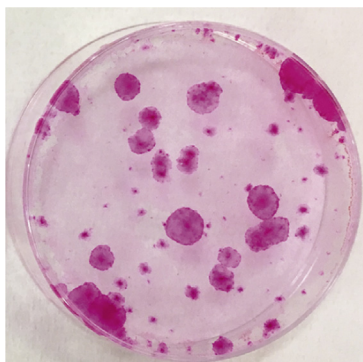
Online-only content can be accessed on the JID Connector at www.jidonline.org/content/connector



Page 790



Page 805



Page 836

EDITORIAL

- 783 **Biomedical Research as a Team Sport**
P Nghiem
- 787 **Clinical Snippets**
- 788 **Editors' Picks**
- 789 ***BJD* Editor's Choice**

ONLINE ONLY

- e31 **Research Techniques Made Simple: Experimental Methodology for Single-Cell Mass Cytometry**
- e39 **Snapshot Dx Quiz: April 2017**
- e41 **Cells to Surgery Quiz: April 2017**

MEETING REPORT

- 790 **Insights into Pathomechanisms and Treatment Development in Heritable Ectopic Mineralization Disorders: Summary of the PXE International Biennial Research Symposium—2016**
J Utitto, Q Li, K van de Wetering, A Váradi and SF Terry

COMMENTARIES

- 796 **Heat-Induced Editing of HPV Genes to Clear Mucocutaneous Warts?**
V Piguet
- 797 **Seeking Standards for the Detection of Merkel Cell Polyomavirus and its Clinical Significance**
M Eid, J Nguyen and I Brownell
- 800 **SCFAs Control Skin Immune Responses via Increasing Tregs**
G Egawa, T Honda and K Kabashima
- 801 **TRPV4 Moves toward Center-Fold in Rosacea Pathogenesis**
Y Chen, CD Moore, JY Zhang, RP Hall III, AS MacLeod and W Liedtke

PERSPECTIVE

- 805 **Do the Side Effects of BRAF Inhibitors Mimic RASopathies?**
A Sfecci, A Dupuy, M Dinulescu, C Droitcourt, H Adamski, S Hadj-Rabia, S Odent, M-D Galibert and L Boussemaert

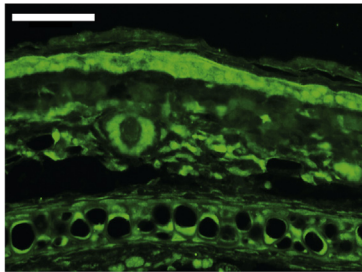
ORIGINAL ARTICLES

Cell Biology

- 810 **Heat Increases the Editing Efficiency of Human Papillomavirus E2 Gene by Inducing Upregulation of APOBEC3A and 3G**
Y Yang, H Wang, X Zhang, W Huo, R Qi, Y Gao, G Zhang, B Song, H Chen and X Gao
- 819 **Polyomavirus-Negative Merkel Cell Carcinoma: A More Aggressive Subtype Based on Analysis of 282 Cases Using Multimodal Tumor Virus Detection**
AS Moshiri, R Doumani, L Yelistratova, A Blom, K Lachance, MM Shinohara, M Delaney, O Chang, S McArdle, H Thomas, MM Asgari, M-L Huang, SM Schwartz and P Nghiem



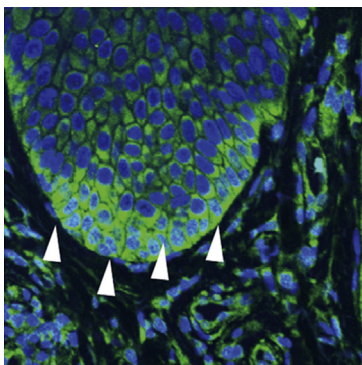
Page 845



Page 855



Page 865



Page 874

Clinical Research

- 828 Depression Is Associated with an Increased Risk of Psoriatic Arthritis among Patients with Psoriasis: A Population-Based Study**

RT Lewinson, IA Vallerand, MW Lowerison, LM Parsons, AD Frolkis, GG Kaplan, AGM Bulloch, MG Swain, SB Patten and C Barnabe

JID Open

Epidemiology

- 836 Correction of Recessive Dystrophic Epidermolysis Bullosa by Transposon-Mediated Integration of *COL7A1* in Transplantable Patient-Derived Primary Keratinocytes**

MC Latella, F Cocchiarella, L De Rosa, G Turchiano, MAFV Gonçalves, F Larcher, M De Luca and A Recchia

Genetics

- 845 Autosomal Recessive Keratoderma-Ichthyosis-Deafness (ARKID) Syndrome Is Caused by *VPS33B* Mutations Affecting Rab Protein Interaction and Collagen Modification**

R Gruber, C Rogerson, C Windpassinger, B Banushi, A Straatman-Iwanowska, J Hanley, F Forneris, R Strohal, P Ulz, D Crumrine, GK Menon, S Blunder, M Schmuth, T Müller, H Smith, K Mills, P Kroisel, AR Janecke and P Gissen

JID Open

- 855 The Short-Chain Fatty Acid Sodium Butyrate Functions as a Regulator of the Skin Immune System**

A Schwarz, A Bruhs and T Schwarz

Immunology/Infection

- 865 Dynamic Changes in Resident and Infiltrating Epidermal Dendritic Cells in Active and Resolved Psoriasis**

E Martini, M Wikén, S Cheuk, I Gallais Sérézal, F Baharom, M Ståhle, A Smed-Sörensen and L Eidsmo

JID Open

- 874 An Acrodermatitis Enteropathica-Associated Zn Transporter, ZIP4, Regulates Human Epidermal Homeostasis**

B-H Bin, J Bhin, N-H Kim, S-H Lee, H-S Jung, J Seo, D-K Kim, D Hwang, T Fukada, A-Y Lee, TR Lee and E-G Cho

Keratinocytes/Epidermis

- 884 Epithelial Barriers in Murine Skin during Herpes Simplex Virus 1 Infection: The Role of Tight Junction Formation**

E Rahn, K Thier, P Petermann, M Rübsam, P Staeheli, S Iden, CM Niessen and D Knebel-Mörsdorf

- 894 Protein Palmitoylation by ZDHHC13 Protects Skin against Microbial-Driven Dermatitis**

L-Y Chen, H-F Yang-Yen, C-C Tsai, CL-P Thio, H-L Chuang, L-T Yang, L-F Shen, I-W Song, K-M Liu, Y-T Huang, F-T Liu, Y-J Chang, Y-T Chen and JJY Yen

- 905 Genomic Characterization of Dysplastic Nevi Unveils Implications for Diagnosis of Melanoma**

RD Melamed, IT Aydin, GS Rajan, R Phelps, DN Silvers, KJ Emmett, G Brunner, R Rabadan and JT Celebi

Melanocytes/Melanoma

- 910 Higher Nevus Count Exhibits a Distinct DNA Methylation Signature in Healthy Human Skin: Implications for Melanoma**

L Roos, JK Sandling, CG Bell, D Glass, M Mangino, TD Spector, P Deloukas, V Bataille and JT Bell

JID Open

- 921 ERBB2 Is Essential for the Growth of Chemically Induced Skin Tumors in Mice**

M Dahlhoff, S Muzumdar, M Schäfer and MR Schneider

Download English Version:

<https://daneshyari.com/en/article/5649532>

Download Persian Version:

<https://daneshyari.com/article/5649532>

[Daneshyari.com](https://daneshyari.com)