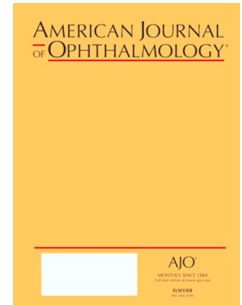


Accepted Manuscript

Glaucoma Progression in the Unaffected Fellow Eye of Glaucoma Patients Who Developed Unilateral Branched Retinal Vein Occlusion

Hae-Young Lopilly Park, M.D., Ph.D., Sooji Jeon, M.D., Mee Yon Lee, M.D., Ph.D.,
Chan Kee Park, M.D., Ph.D.



PII: S0002-9394(16)30521-9

DOI: [10.1016/j.ajo.2016.10.009](https://doi.org/10.1016/j.ajo.2016.10.009)

Reference: AJOPHT 9931

To appear in: *American Journal of Ophthalmology*

Received Date: 28 June 2016

Revised Date: 19 October 2016

Accepted Date: 19 October 2016

Please cite this article as: Lopilly Park H-Y, Jeon S, Lee MY, Park CK, Glaucoma Progression in the Unaffected Fellow Eye of Glaucoma Patients Who Developed Unilateral Branched Retinal Vein Occlusion, *American Journal of Ophthalmology* (2016), doi: 10.1016/j.ajo.2016.10.009.

This is a PDF file of an unedited manuscript that has been accepted for publication. As a service to our customers we are providing this early version of the manuscript. The manuscript will undergo copyediting, typesetting, and review of the resulting proof before it is published in its final form. Please note that during the production process errors may be discovered which could affect the content, and all legal disclaimers that apply to the journal pertain.

Abstract

Purpose: To investigate glaucoma progression in eyes with glaucoma who developed unilateral branched retinal vein occlusion (BRVO) in the contralateral eye.

Design: Retrospective, case-control study.

Methods:

- **Participants:** Forty glaucoma patients with unilateral BRVO and 40 age- and baseline mean deviation (MD) of the visual field (VF)-matched glaucoma patients were evaluated during at least 4 years of follow-up.
- **Observation procedures:** Glaucoma progression was defined as VF progression using the modified Anderson criteria of the MD of the VF. Kaplan-Meier life table analyses were performed to compare times to confirmed VF progression, and related risk factors were evaluated using the Cox proportional hazards model.
- **Main outcome measures:** VF progression.

Results: Comparison of the baseline characteristics between the glaucomatous eyes that developed BRVO and the contralateral glaucomatous eyes that did not develop BRVO showed that BRVO occurred in the more advance-staged eyes. Patients with glaucoma with BRVO in the fellow eyes had significant and frequent detection of disc hemorrhage (35.0%), which was 7.5% in patients with glaucoma without BRVO ($P = 0.003$). Four (10%) patients from the glaucoma group without BRVO and 22 (55.0%) patients from the glaucoma group with BRVO in the fellow eye showed progression according to the modified Anderson criteria ($P < 0.001$). Disc hemorrhage and the presence of BRVO in the fellow eye were found to be significantly predictive of VF progression using the Cox proportional hazards model.

Conclusions: More advanced glaucomatous eyes develop BRVO. Patients who developed BRVO showed more rapid glaucoma progression in the contralateral eyes without BRVO compared with glaucoma patients who did not develop BRVO.

Download English Version:

<https://daneshyari.com/en/article/5703146>

Download Persian Version:

<https://daneshyari.com/article/5703146>

[Daneshyari.com](https://daneshyari.com)