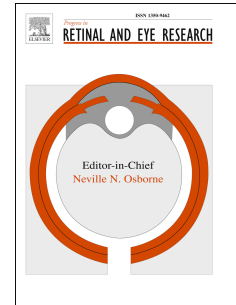


Accepted Manuscript

The connective tissue phenotype of glaucomatous cupping in the monkey eye -
Clinical and research implications

Hongli Yang, Juan Reynaud, Howard Lockwood, Galen Williams, Christy Hardin,
Luke Reyes, Cheri Stowell, Stuart K. Gardiner, Claude F. Burgoyne, MD



PII: S1350-9462(17)30032-0

DOI: [10.1016/j.preteyeres.2017.03.001](https://doi.org/10.1016/j.preteyeres.2017.03.001)

Reference: JPRR 662

To appear in: *Progress in Retinal and Eye Research*

Received Date: 17 November 2016

Revised Date: 14 February 2017

Accepted Date: 6 March 2017

Please cite this article as: Yang, H., Reynaud, J., Lockwood, H., Williams, G., Hardin, C., Reyes, L., Stowell, C., Gardiner, S.K., Burgoyne, C.F., The connective tissue phenotype of glaucomatous cupping in the monkey eye - Clinical and research implications, *Progress in Retinal and Eye Research* (2017), doi: 10.1016/j.preteyeres.2017.03.001.

This is a PDF file of an unedited manuscript that has been accepted for publication. As a service to our customers we are providing this early version of the manuscript. The manuscript will undergo copyediting, typesetting, and review of the resulting proof before it is published in its final form. Please note that during the production process errors may be discovered which could affect the content, and all legal disclaimers that apply to the journal pertain.

The Connective Tissue Phenotype of Glaucomatous Cupping in the Monkey Eye - Clinical and Research Implications.

Hongli Yang,^{a,b} Juan Reynaud,^{a,b} Howard Lockwood,^{a,b} Galen Williams,^{a,b} Christy Hardin,^{a,b} Luke Reyes,^{a,b} Cheri Stowell,^{a,b} Stuart K. Gardiner,^b and Claude F. Burgoyne, MD,^{a,b}

From the ^aDevers Eye Institute, Optic Nerve Head Research Laboratory, Legacy Research Institute, Portland, Oregon; ^bDevers Eye Institute, Discoveries in Sight Research Laboratories, Legacy Research Institute, Portland, Oregon

Word count (text only): 16,804

Tables: 1

Figures: 52

Corresponding Author: Claude F. Burgoyne, MD, Email: cfburgoyne@deverseye.org.

Address: Optic Nerve Head Research Laboratory, Devers Eye Institute, Legacy Research Institute, 1225 NE 2nd Ave, Portland OR 97232.

Short title: The Connective Tissue Phenotype of Glaucomatous Cupping

Download English Version:

<https://daneshyari.com/en/article/5705676>

Download Persian Version:

<https://daneshyari.com/article/5705676>

[Daneshyari.com](https://daneshyari.com)