

Accepted Manuscript

Exudative Retinal Detachment

Radgonde Amer, MD, Hilal Nalcı, MD, Nilüfer Yalçındağ, MD

PII: S0039-6257(16)30265-X

DOI: [10.1016/j.survophthal.2017.05.001](https://doi.org/10.1016/j.survophthal.2017.05.001)

Reference: SOP 6720

To appear in: *Survey of Ophthalmology*

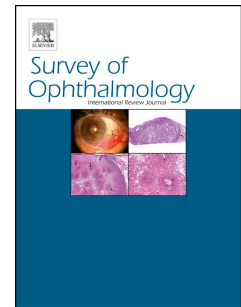
Received Date: 6 December 2016

Revised Date: 1 May 2017

Accepted Date: 5 May 2017

Please cite this article as: Amer R, Nalcı H, Yalçındağ N, Exudative Retinal Detachment, *Survey of Ophthalmology* (2017), doi: 10.1016/j.survophthal.2017.05.001.

This is a PDF file of an unedited manuscript that has been accepted for publication. As a service to our customers we are providing this early version of the manuscript. The manuscript will undergo copyediting, typesetting, and review of the resulting proof before it is published in its final form. Please note that during the production process errors may be discovered which could affect the content, and all legal disclaimers that apply to the journal pertain.



Exudative Retinal Detachment

Radgonde Amer, MD,¹ Hilal Nalcı, MD,² Nilüfer Yalçındağ, MD²

1: Department of Ophthalmology, Hadassah Medical Center, Jerusalem, Israel

2: Department of Ophthalmology, University of Ankara, Ankara, Turkey

Correspondence and reprints:

Radgonde Amer, MD

Department of Ophthalmology

Hadassah University Hospital

POB 12000

Jerusalem 91120, Israel

Phone: 972-2-6776365

Fax: 972-2-6428896

E-mail: radgonde@gmail.com

Financial support: none

Conflict of interest: None

Download English Version:

<https://daneshyari.com/en/article/5705717>

Download Persian Version:

<https://daneshyari.com/article/5705717>

[Daneshyari.com](https://daneshyari.com)