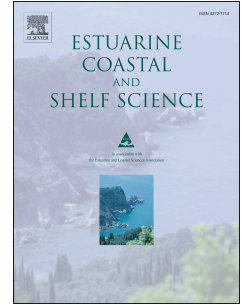


Accepted Manuscript

Two distinct mtDNA lineages of the blue crab reveal large-scale population structure in its native Atlantic distribution

Marcos Alaniz Rodrigues, Luiz Felipe Cestari Dumont, Cléverson Rannieri Meira dos Santos, Fernando D'Incao, Steven Weiss, Elsa Froufe



PII: S0272-7714(16)30389-4

DOI: [10.1016/j.ecss.2017.08.004](https://doi.org/10.1016/j.ecss.2017.08.004)

Reference: YECSS 5559

To appear in: *Estuarine, Coastal and Shelf Science*

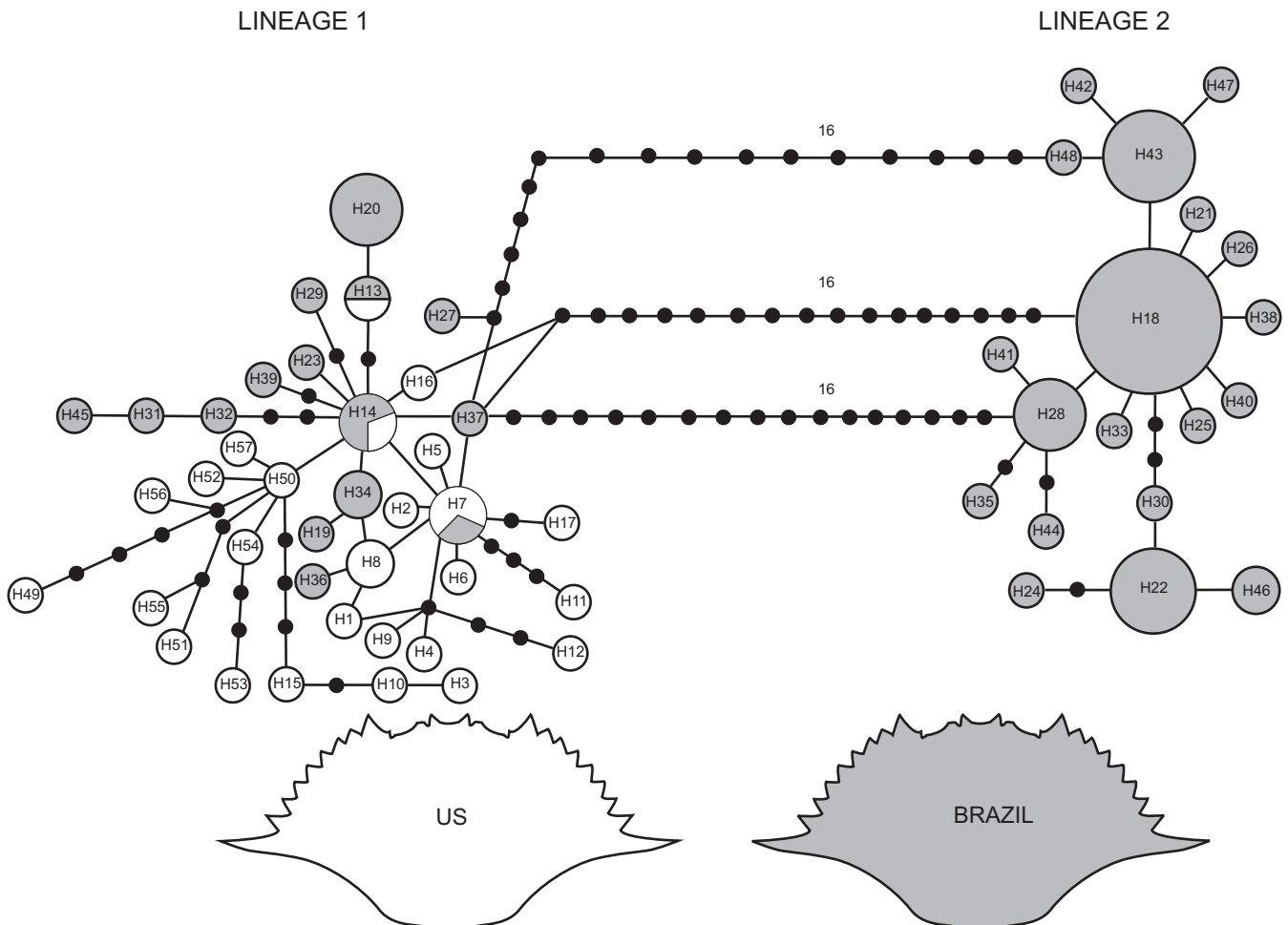
Received Date: 23 September 2016

Revised Date: 29 May 2017

Accepted Date: 6 August 2017

Please cite this article as: Alaniz Rodrigues, M., Dumont, L.F.C., dos Santos, Clé.Rannieri.Meira., D'Incao, F., Weiss, S., Froufe, E., Two distinct mtDNA lineages of the blue crab reveal large-scale population structure in its native Atlantic distribution, *Estuarine, Coastal and Shelf Science* (2017), doi: 10.1016/j.ecss.2017.08.004.

This is a PDF file of an unedited manuscript that has been accepted for publication. As a service to our customers we are providing this early version of the manuscript. The manuscript will undergo copyediting, typesetting, and review of the resulting proof before it is published in its final form. Please note that during the production process errors may be discovered which could affect the content, and all legal disclaimers that apply to the journal pertain.



Download English Version:

<https://daneshyari.com/en/article/5765057>

Download Persian Version:

<https://daneshyari.com/article/5765057>

[Daneshyari.com](https://daneshyari.com)