

Accepted Manuscript

Approximation scheme for essentially bandlimited and space-concentrated functions on a disk

Boris Landa, Yoel Shkolnisky

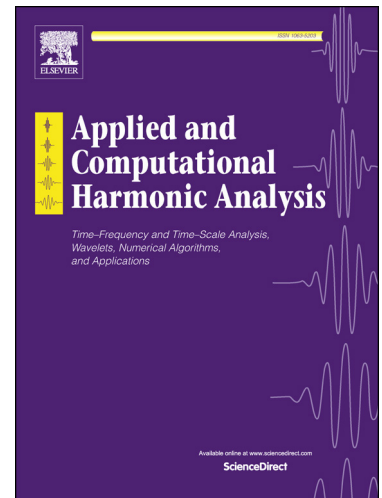
PII: S1063-5203(16)00007-5
DOI: <http://dx.doi.org/10.1016/j.acha.2016.01.006>
Reference: YACHA 1115

To appear in: *Applied and Computational Harmonic Analysis*

Received date: 22 May 2015
Revised date: 3 January 2016
Accepted date: 26 January 2016

Please cite this article in press as: B. Landa, Y. Shkolnisky, Approximation scheme for essentially bandlimited and space-concentrated functions on a disk, *Appl. Comput. Harmon. Anal.* (2016), <http://dx.doi.org/10.1016/j.acha.2016.01.006>

This is a PDF file of an unedited manuscript that has been accepted for publication. As a service to our customers we are providing this early version of the manuscript. The manuscript will undergo copyediting, typesetting, and review of the resulting proof before it is published in its final form. Please note that during the production process errors may be discovered which could affect the content, and all legal disclaimers that apply to the journal pertain.



Approximation scheme for essentially bandlimited and
space-concentrated functions on a disk

Boris Landa and Yoel Shkolnisky

January 27, 2016

Boris Landa
Department of Applied Mathematics, School of Mathematical Sciences
Tel-Aviv University
sboris20@gmail.com

Yoel Shkolnisky
Department of Applied Mathematics, School of Mathematical Sciences
Tel-Aviv University
yoelsh@post.tau.ac.il

Please address manuscript correspondence to Boris Landa, sboris20@gmail.com,
(972) 549427603.

Download English Version:

<https://daneshyari.com/en/article/5773555>

Download Persian Version:

<https://daneshyari.com/article/5773555>

[Daneshyari.com](https://daneshyari.com)