

# Accepted Manuscript

Crustal structure of the high Andes in the north Pampean flat slab segment from magnetic and gravity data

Marcos A. Sánchez, Diego Winocur, Orlando Álvarez, Andrés Folguera, Myriam P. Martínez



PII: S0895-9811(16)30323-6

DOI: [10.1016/j.jsames.2016.12.007](https://doi.org/10.1016/j.jsames.2016.12.007)

Reference: SAMES 1636

To appear in: *Journal of South American Earth Sciences*

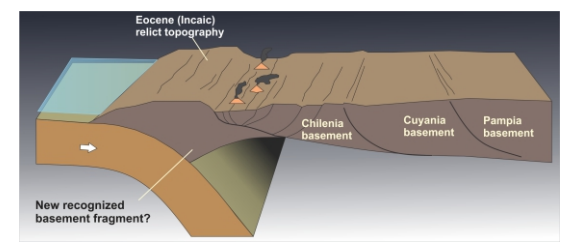
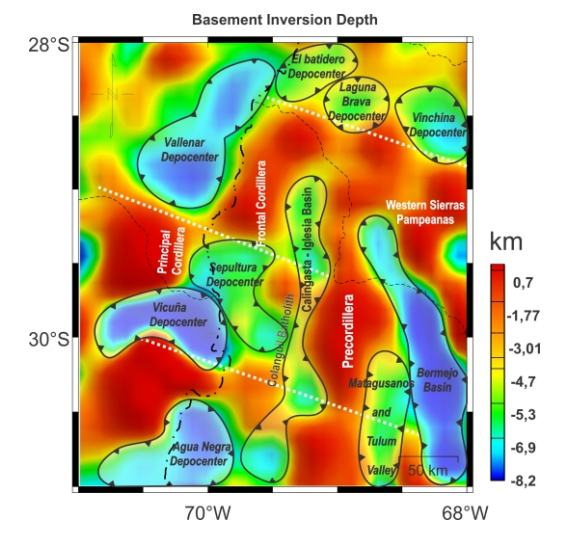
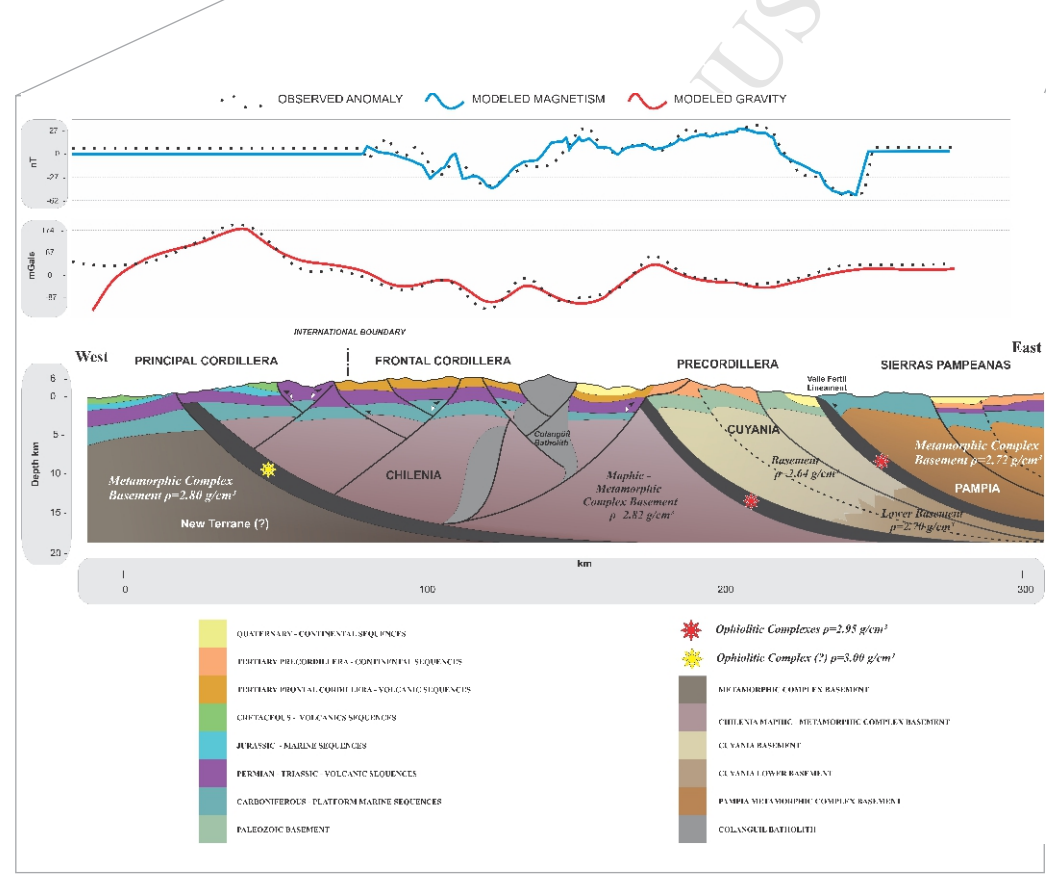
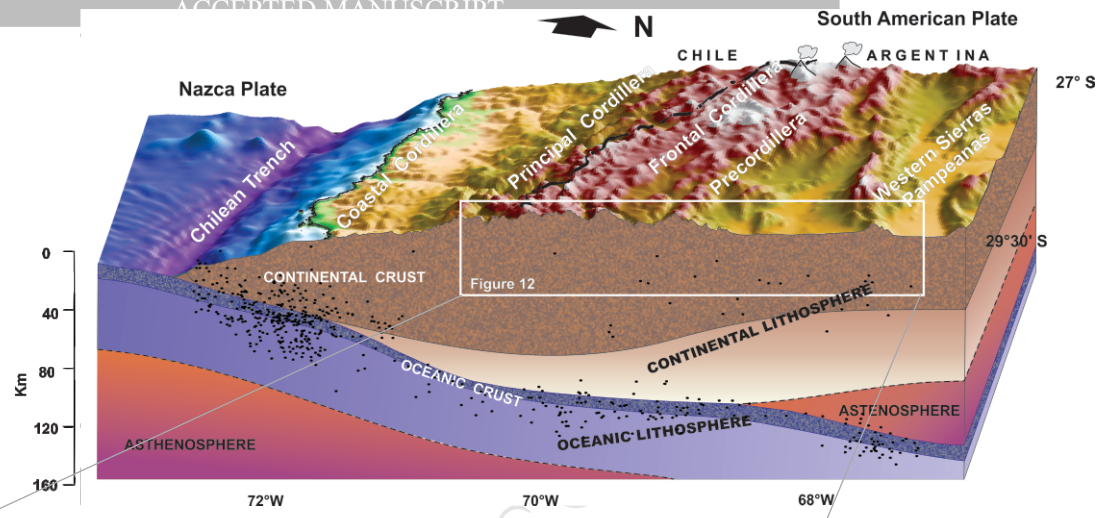
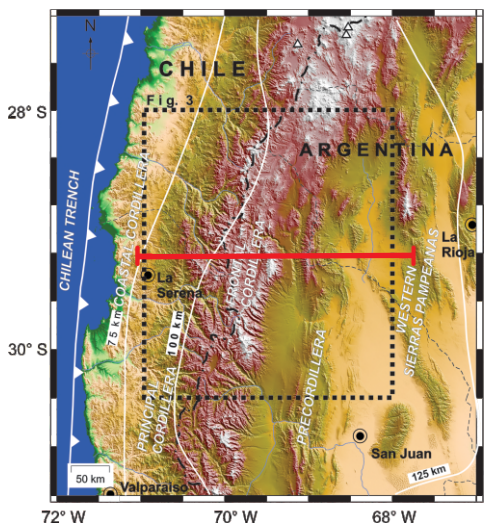
Received Date: 12 December 2015

Revised Date: 16 July 2016

Accepted Date: 9 December 2016

Please cite this article as: Sánchez, M.A., Winocur, D., Álvarez, O., Folguera, A., Martínez, M.P., Crustal structure of the high Andes in the north Pampean flat slab segment from magnetic and gravity data, *Journal of South American Earth Sciences* (2017), doi: 10.1016/j.jsames.2016.12.007.

This is a PDF file of an unedited manuscript that has been accepted for publication. As a service to our customers we are providing this early version of the manuscript. The manuscript will undergo copyediting, typesetting, and review of the resulting proof before it is published in its final form. Please note that during the production process errors may be discovered which could affect the content, and all legal disclaimers that apply to the journal pertain.



**Graphical Abstract:**

**CRUSTAL STRUCTURE OF THE HIGH ANDES IN THE NORTH PAMPEAN FLAT SLAB SEGMENT FROM MAGNETIC AND GRAVITY DATA**

Download English Version:

<https://daneshyari.com/en/article/5780517>

Download Persian Version:

<https://daneshyari.com/article/5780517>

[Daneshyari.com](https://daneshyari.com)