

Accepted Manuscript

The repeated introduction of the H3N2 virus from human to swine during 1979 to 1993 in China

Wenfei Zhu, Shuai Yang, Libo Dong, Lei Yang, Jing Tang, Xiaohui Zou, Tao Chen, Jing Yang, Yuelong Shu

PII: S1567-1348(15)00126-4

DOI: <http://dx.doi.org/10.1016/j.meegid.2015.04.001>

Reference: MEEGID 2305

To appear in: *Infection, Genetics and Evolution*

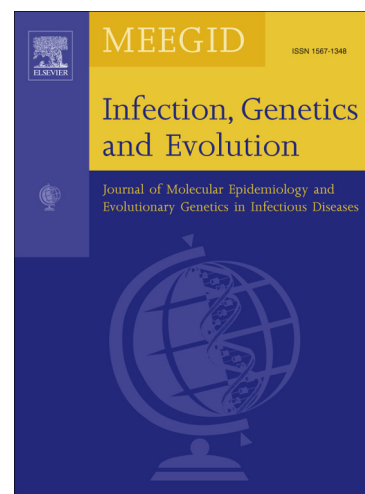
Received Date: 26 December 2014

Revised Date: 26 March 2015

Accepted Date: 1 April 2015

Please cite this article as: Zhu, W., Yang, S., Dong, L., Yang, L., Tang, J., Zou, X., Chen, T., Yang, J., Shu, Y., The repeated introduction of the H3N2 virus from human to swine during 1979 to 1993 in China, *Infection, Genetics and Evolution* (2015), doi: <http://dx.doi.org/10.1016/j.meegid.2015.04.001>

This is a PDF file of an unedited manuscript that has been accepted for publication. As a service to our customers we are providing this early version of the manuscript. The manuscript will undergo copyediting, typesetting, and review of the resulting proof before it is published in its final form. Please note that during the production process errors may be discovered which could affect the content, and all legal disclaimers that apply to the journal pertain.



Research Article**Title Page****Title:**

The repeated introduction of the H3N2 virus from human to swine during 1979 to 1993 in China

Authors, affiliations, addresses, email address, and phone and fax numbers

Wenfei Zhu†, Shuai Yang†, Libo Dong†, Lei Yang, Jing Tang, Xiaohui Zou, Tao Chen, Jing Yang, Yuelong Shu*.

Chinese National Influenza Center, National Institute for Viral Disease Control and Prevention; Key Laboratory of Surveillance and Early-warning on Infectious Disease, China CDC, Key Laboratory for Medical Virology, National Health and Family Planning Commission, 155 Changbai Road, Beijing, 102206, P.R China.

†These authors contributed equally in this study.

*Correspondence footnote:

Mailing address: National Institute for Viral Disease Control and Prevention, China CDC, 155 Changbai Road, Beijing, 102206, P. R China.

Dr. Yuelong Shu, Phone: +86-010-58900850. Fax: +86-010-58900850. E-mail: yshu@cnic.org.cn;

Download English Version:

<https://daneshyari.com/en/article/5908837>

Download Persian Version:

<https://daneshyari.com/article/5908837>

[Daneshyari.com](https://daneshyari.com)