

## Accepted Manuscript

Spatial and Temporal Patterns of Diversification on the Amazon: A Test of the Riverine Hypothesis for all Diurnal Primates of Rio Negro and Rio Branco in Brazil

Jean P. Boubli, Camila Ribas, Jessica W. Lynch Alfaro, Michael E. Alfaro, Maria Nazareth F. da Silva, Gabriela M. Pinho, Izeni P. Farias

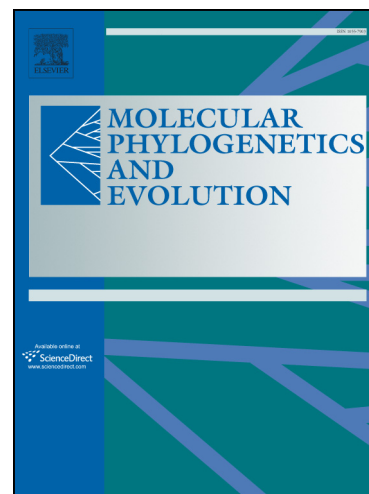
PII: S1055-7903(14)00317-0  
DOI: <http://dx.doi.org/10.1016/j.ympev.2014.09.005>  
Reference: YMPEV 5015

To appear in: *Molecular Phylogenetics and Evolution*

Received Date: 1 October 2013  
Revised Date: 27 August 2014  
Accepted Date: 9 September 2014

Please cite this article as: Boubli, J.P., Ribas, C., Lynch Alfaro, J.W., Alfaro, M.E., da Silva, M.N.F., Pinho, G.M., Farias, I.P., Spatial and Temporal Patterns of Diversification on the Amazon: A Test of the Riverine Hypothesis for all Diurnal Primates of Rio Negro and Rio Branco in Brazil, *Molecular Phylogenetics and Evolution* (2014), doi: <http://dx.doi.org/10.1016/j.ympev.2014.09.005>

This is a PDF file of an unedited manuscript that has been accepted for publication. As a service to our customers we are providing this early version of the manuscript. The manuscript will undergo copyediting, typesetting, and review of the resulting proof before it is published in its final form. Please note that during the production process errors may be discovered which could affect the content, and all legal disclaimers that apply to the journal pertain.



**Spatial and Temporal Patterns of Diversification on the Amazon: A Test of the  
Riverine Hypothesis for all Diurnal Primates of Rio Negro and Rio Branco in  
Brazil**

Jean P. Boubli<sup>1, 2\*</sup>, Camila Ribas<sup>2</sup>, Jessica W. Lynch Alfaro<sup>3,4</sup>, Michael E. Alfaro<sup>3,5</sup>,

Maria Nazareth F. da Silva<sup>2</sup>, Gabriela M. Pinho<sup>6</sup>, Izeni P. Farias<sup>6</sup>

<sup>1</sup> *School of Environment and Life Sciences, 315 Peel Building, University of Salford, Salford, M5 4WT UK, [j.p.boubli@salford.ac.uk](mailto:j.p.boubli@salford.ac.uk);*

<sup>2</sup> *Instituto Nacional de Pesquisas da Amazonia INPA, Manaus, Brazil, [camilaribas@gmail.com](mailto:camilaribas@gmail.com), [mndasilva@gmail.com](mailto:mndasilva@gmail.com); [jeanpboubli@gmail.com](mailto:jeanpboubli@gmail.com)*

<sup>3</sup> *Institute for Society and Genetics; 1321 Rolfe Hall, University of California, Los Angeles, CA 90095, USA, [jlynchalfaro@ucla.edu](mailto:jlynchalfaro@ucla.edu)*

<sup>4</sup> *Department of Anthropology, University of California, Los Angeles, CA 90095, USA*

<sup>5</sup> *Department of Ecology and Evolutionary Biology, University of California, Los Angeles, CA 90095, USA, [michaelalfaro@ucla.edu](mailto:michaelalfaro@ucla.edu);*

<sup>6</sup> *Universidade Federal do Amazonas, Laboratório de Evolução e Genética Animal, Manaus, AM, Brazil*

\*Corresponding author: Jean P. Boubli, School of Environment and Life Sciences

Room 315, Peel Building, University of Salford, Salford M5 4WT, UK

t: +44 (0)161-295-6825

Download English Version:

<https://daneshyari.com/en/article/5918917>

Download Persian Version:

<https://daneshyari.com/article/5918917>

[Daneshyari.com](https://daneshyari.com)