

Accepted Manuscript

Phylogenetic Relationships Of The Operculate Land Snail Genus *Cyclophorus* Montfort, 1810 In Thailand

Nattawadee Nantarat, Piyoros Tongkerd, Chirasak Sutcharit, Christopher M. Wade, Fred Naggs, Somsak Panha

PII: S1055-7903(13)00367-9

DOI: <http://dx.doi.org/10.1016/j.ympev.2013.09.013>

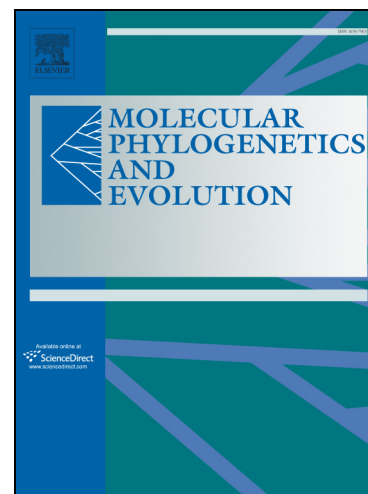
Reference: YMPEV 4714

To appear in: *Molecular Phylogenetics and Evolution*

Received Date: 6 April 2013

Revised Date: 13 September 2013

Accepted Date: 14 September 2013



Please cite this article as: Nantarat, N., Tongkerd, P., Sutcharit, C., Wade, C.M., Naggs, F., Panha, S., Phylogenetic Relationships Of The Operculate Land Snail Genus *Cyclophorus* Montfort, 1810 In Thailand, *Molecular Phylogenetics and Evolution* (2013), doi: <http://dx.doi.org/10.1016/j.ympev.2013.09.013>

This is a PDF file of an unedited manuscript that has been accepted for publication. As a service to our customers we are providing this early version of the manuscript. The manuscript will undergo copyediting, typesetting, and review of the resulting proof before it is published in its final form. Please note that during the production process errors may be discovered which could affect the content, and all legal disclaimers that apply to the journal pertain.

**PHYLOGENETIC RELATIONSHIPS OF THE OPERCULATE LAND SNAIL
GENUS *CYCLOPHORUS* MONTFORT, 1810 IN THAILAND**

Nattawadee Nantarat^{a,b}

^a Biological Sciences Program, Faculty of Science, Chulalongkorn University, Bangkok
10330, Thailand

^b Animal Systematics Research Unit, Department of Biology, Faculty of Science,
Chulalongkorn University, Bangkok 10330, Thailand

Email: n_nantarat@yahoo.com

Piyoros Tongkerd^b

^b Animal Systematics Research Unit, Department of Biology, Faculty of Science,
Chulalongkorn University, Bangkok 10330, Thailand

Chirasak Sutcharit^b

^b Animal Systematics Research Unit, Department of Biology, Faculty of Science,
Chulalongkorn University, Bangkok 10330, Thailand

Christopher M. Wade^c

^c School of Biology, University of Nottingham, University Park, Nottingham, NG7 2RD, UK

Fred Naggs^d

^d Department of Zoology, The Natural History Museum, London SW7 5BD, UK

Somsak Panha^{b,*}

^b Animal Systematics Research Unit, Department of Biology, Faculty of Science,
Chulalongkorn University, Bangkok 10330, Thailand (*Corresponding author)

Email: somsak.pan@chula.ac.th

*Corresponding author. Tel./fax: +66 2 2185273

E-mail addresses: somsak.pan@chula.ac.th (S. Panha).

Download English Version:

<https://daneshyari.com/en/article/5919349>

Download Persian Version:

<https://daneshyari.com/article/5919349>

[Daneshyari.com](https://daneshyari.com)