

## Accepted Manuscript

Multilocus analysis of intraspecific differentiation in three endemic bird species from the northern Neotropical dry forest

Enrique Arbeláez-Cortés, Borja Milá, Adolfo G. Navarro-Sigüenza

PII: S1055-7903(13)00392-8

DOI: <http://dx.doi.org/10.1016/j.ympev.2013.10.006>

Reference: YMPEV 4735

To appear in: *Molecular Phylogenetics and Evolution*

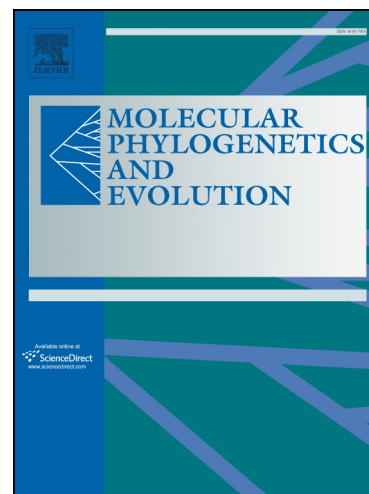
Received Date: 16 February 2013

Revised Date: 4 October 2013

Accepted Date: 6 October 2013

Please cite this article as: Arbeláez-Cortés, E., Milá, B., Navarro-Sigüenza, A.G., Multilocus analysis of intraspecific differentiation in three endemic bird species from the northern Neotropical dry forest, *Molecular Phylogenetics and Evolution* (2013), doi: <http://dx.doi.org/10.1016/j.ympev.2013.10.006>

This is a PDF file of an unedited manuscript that has been accepted for publication. As a service to our customers we are providing this early version of the manuscript. The manuscript will undergo copyediting, typesetting, and review of the resulting proof before it is published in its final form. Please note that during the production process errors may be discovered which could affect the content, and all legal disclaimers that apply to the journal pertain.



# Multilocus analysis of intraspecific differentiation in three endemic bird species from the northern Neotropical dry forest

Enrique Arbeláez-Cortés<sup>1,2,\*</sup>

Borja Milá<sup>3</sup>

Adolfo G. Navarro-Sigüenza<sup>1</sup>

<sup>1</sup> Museo de Zoología, Departamento de Biología Evolutiva, Facultad de Ciencias, Universidad Nacional Autónoma de México, Apartado Postal 70-399, México D.F. 04510, México

<sup>2</sup> Posgrado en Ciencias Biológicas, Universidad Nacional Autónoma de México, Ciudad Universitaria 04510, México D.F., México

<sup>3</sup> National Museum of Natural Sciences, Spanish Research Council (CSIC), Madrid 28006, Spain.

\*Corresponding author. Enrique Arbeláez-Cortés. Email: enriquearbelaez@gmail.com. Phone: (52-55) 56 22 54 35. Fax: (52-55) 56 22 48 28. Museo de Zoología, Departamento de Biología Evolutiva, Facultad de Ciencias, Universidad Nacional Autónoma de México, Apartado Postal 70-399, México D.F. 04510, México

Borja Milá. Email: b.mila@csic.es

Adolfo G. Navarro-Sigüenza. Email: adolfon@ciencias.unam.mx

Download English Version:

<https://daneshyari.com/en/article/5919395>

Download Persian Version:

<https://daneshyari.com/article/5919395>

[Daneshyari.com](https://daneshyari.com)