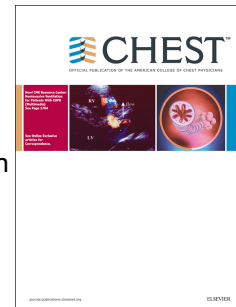


# Accepted Manuscript

## Sex-Specific Prediction Models for Sleep Apnea from the Hispanic Community Health Study/Study of Latinos

Neomi Shah, MD MPH, David B. Hanna, PhD, Yanping Teng, MD MSPH, Daniela Sotres-Alvarez, PhD, Martica Hall, PhD, Jose S. Loredó, MD MS MPH, Phyllis Zee, MD PhD, Mimi Kim, ScD, H. Klar Yaggi, MD, Susan Redline, MD MPH, Robert C. Kaplan, PhD



PII: S0012-3692(16)00476-1

DOI: [10.1016/j.chest.2016.01.013](https://doi.org/10.1016/j.chest.2016.01.013)

Reference: CHEST 257

To appear in: *CHEST*

Received Date: 15 July 2015

Revised Date: 2 December 2015

Accepted Date: 4 January 2016

Please cite this article as: Shah N, Hanna DB, Teng Y, Sotres-Alvarez D, Hall M, Loredó JS, Zee P, Kim M, Yaggi HK, Redline S, Kaplan RC, Sex-Specific Prediction Models for Sleep Apnea from the Hispanic Community Health Study/Study of Latinos, *CHEST* (2016), doi: 10.1016/j.chest.2016.01.013.

This is a PDF file of an unedited manuscript that has been accepted for publication. As a service to our customers we are providing this early version of the manuscript. The manuscript will undergo copyediting, typesetting, and review of the resulting proof before it is published in its final form. Please note that during the production process errors may be discovered which could affect the content, and all legal disclaimers that apply to the journal pertain.

Word Count, Abstract: 240

Word Count, Manuscript: 2,944

# **Sex-Specific Prediction Models for Sleep Apnea from the Hispanic Community Health Study/Study of Latinos**

## **Short title: Sex-Specific Prediction Models for Sleep Apnea**

Neomi Shah, MD MPH<sup>1</sup>, David B. Hanna, PhD<sup>1</sup>, Yanping Teng, MD MSPH<sup>2</sup>, Daniela Sotres-Alvarez PhD<sup>2</sup>, Martica Hall, PhD<sup>3</sup>, Jose S. Loreda, MD MS MPH<sup>4</sup>, Phyllis Zee, MD PhD<sup>5</sup>, Mimi Kim, ScD<sup>1</sup>, H. Klar Yaggi, MD<sup>6</sup>, Susan Redline, MD MPH<sup>7</sup>, Robert C. Kaplan, PhD<sup>1</sup>

- 1) Albert Einstein College of Medicine, Bronx, NY
- 2) University of North Carolina, Chapel Hill, NC
- 3) University of Pittsburgh School of Medicine, Pittsburgh, PA
- 4) University of California San Diego, San Diego, CA
- 5) Northwestern University, Chicago, IL
- 6) Yale School of Medicine, New Haven, CT
- 7) Harvard Medical School, Brigham and Woman's Hospital, Boston, MA

### Corresponding Author

Neomi Shah M.D., M.P.H  
Montefiore Medical Center  
Albert Einstein College of Medicine  
3411 Wayne Avenue  
Suite 5H  
Bronx, NY 10467  
nshah@montefiore.org

### Authors' conflict of interest disclosures

PZ participated in clinical trials funded by Jazz and VANDA. Consultant for Philips Respironics, Merck & Co., Jazz, VANDA, Pernix, Aptalis, UCB, Purdue, Takeda and Ferring. Industry sponsored CME: Case-based lectures on hypersomnia funded by an educational grant from Jazz to the Atlanta School of Sleep Medicine and Technology. Is a stockholder of Teva Pharmaceuticals. All others declare no conflicts of interest.

### Funding Information

The Hispanic Community Health Study/Study of Latinos was carried out as a collaborative study supported by contracts from the National Heart, Lung, and Blood Institute (NHLBI) to the University of North Carolina (N01-HC65233), University of Miami (N01-HC65234), Albert Einstein College of Medicine (N01-HC65235), Northwestern University (N01-HC65236), and San Diego State University (N01-HC65237). The following Institutes/Centers/Offices contribute to the HCHS/SOL through a transfer of funds to the NHLBI: National Institute on Minority Health and Health Disparities, National Institute on Deafness and Other Communication Disorders, National Institute of Dental and Craniofacial Research, National Institute of Diabetes and Digestive and Kidney Diseases, National Institute of Neurological Disorders and Stroke, NIH Institution-Office of Dietary Supplements. The above funding

Download English Version:

<https://daneshyari.com/en/article/5952370>

Download Persian Version:

<https://daneshyari.com/article/5952370>

[Daneshyari.com](https://daneshyari.com)