



## Case Report

# Acute myocardial infarction caused by left anterior descending artery occlusion presenting as inferior ST elevation and anterior ST depression



Tsuyoshi Honda (MD)\*, Kazuteru Fujimoto (MD), Yuji Miyao (MD),  
Hidenobu Koga (MD), Masanobu Ishii (MD)

Department of Cardiology, Cardiovascular Center, National Hospital Organization Kumamoto Medical Center, Kumamoto, Japan

## ARTICLE INFO

## Article history:

Received 29 August 2013  
Received in revised form  
24 September 2013  
Accepted 5 October 2013

## Keyword:

Acute myocardial infarction  
Electrocardiogram  
Collaterals

## ABSTRACT

We report a case of acute myocardial infarction caused by left anterior descending artery occlusion presenting as ST elevation in the inferior leads and ST depression in the precordial leads, suggesting an involvement of the right coronary artery (RCA). However, coronary angiography (CAG) showed a complete occlusion of the proximal left anterior descending (LAD) coronary artery and collaterals from the left circumflex coronary artery and the RCA. Although he underwent primary percutaneous coronary intervention (PCI), he had chest pain at four days after primary PCI. His electrocardiogram (ECG) showed precordial ST elevation, suggesting an involvement of the LAD. Emergent CAG showed a complete occlusion of the proximal LAD without collaterals, but his ECG showed precordial ST elevation that was different from ST changes seen on admission. These unusual ST-segment changes might be associated with a weaker anterior ischemia due to collaterals and a strong inferior ischemia due to wrapped LAD artery.

**<Learning objective:** Inferior ST elevation and anterior ST depression generally indicate inferior myocardial infarction. However, the unusual ST-segment changes seen in this patient with anterior myocardial infarction might be associated with a weaker anterior ischemia due to collaterals and a strong inferior ischemia due to wrapped left anterior descending artery.>

© 2013 Japanese College of Cardiology. Published by Elsevier Ltd. All rights reserved.

## Introduction

Acute ST-segment elevations in the inferior leads generally suggest acute occlusion of the right coronary artery (RCA). Occlusion of the left anterior descending coronary artery (LAD) may cause infarction of the anterior wall of the left ventricle, manifested as precordial ST-segment elevations. Inferior ST-segment elevations due to occlusion of a LAD may reflect an ischemia of wrapped LAD artery [1,2]. We describe a patient with ST elevation in inferior leads and ST depression in precordial leads caused by acute occlusion at the proximal segment LAD with collateral flow from the left circumflex (LCx) coronary artery and RCA.

## Case report

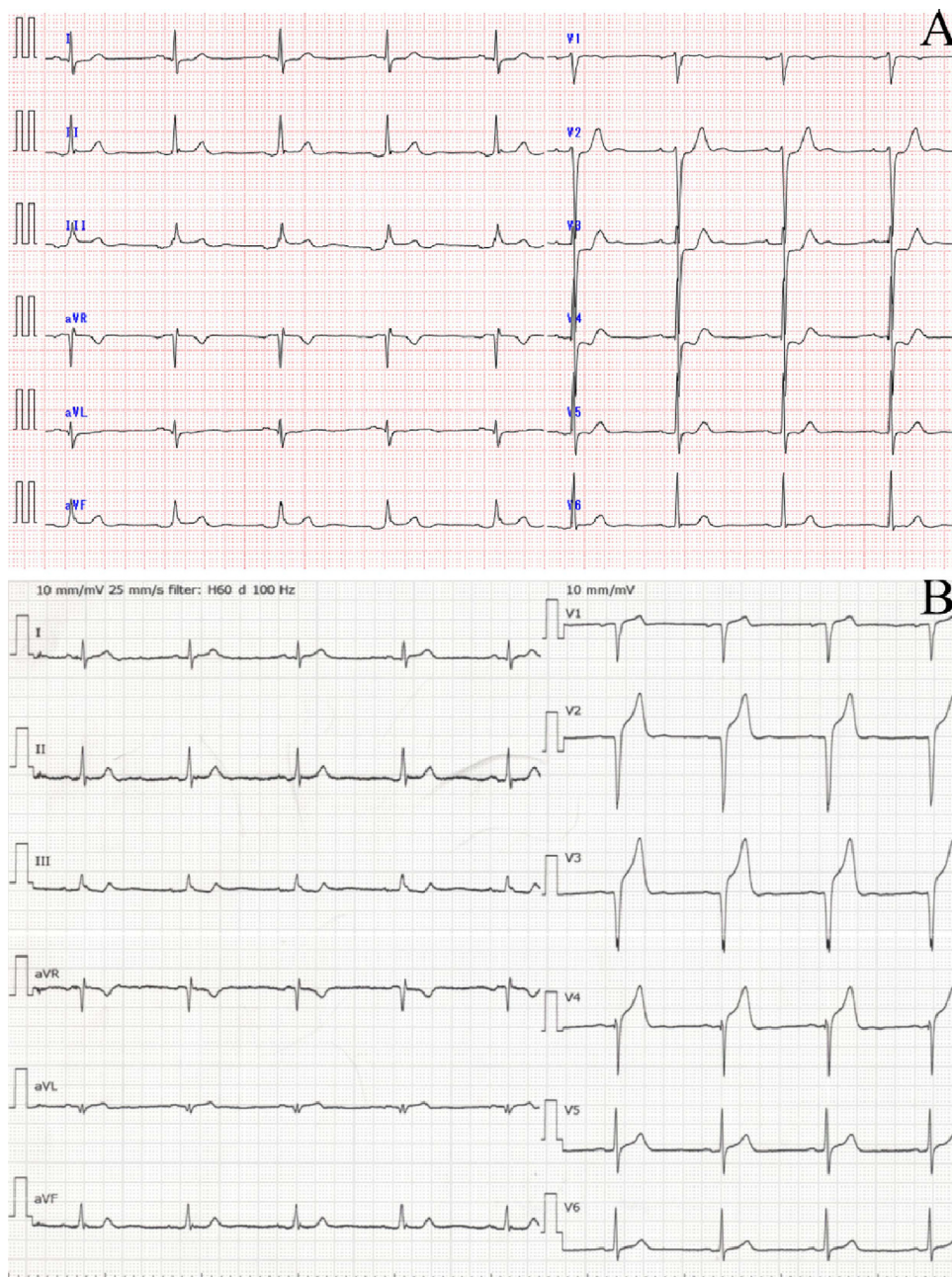
A 53-year-old man was referred to our hospital for chest pain he had experienced for a few hours. His electrocardiogram (ECG) showed ST-segment elevation in the inferior leads and ST-segment depression in the V2–V4 leads (Figs. 1 and 2A), suggesting an involvement of the RCA. However, emergent coronary angiography (CAG) showed a complete proximal occlusion of the LAD coronary artery (Fig. 3A, arrow 1) and collaterals from the LCx coronary artery (Fig. 3A and B, arrows 2–3) and the RCA (Fig. 3C, arrows 4–5). He underwent primary percutaneous coronary intervention (PCI) with coronary artery stenting to the infarct-related LAD. Four days after primary PCI, he had chest pain again. His ECG showed precordial ST elevation (Figs. 1B and 2), suggesting an involvement of LAD. Emergent CAG showed a complete proximal occlusion of the LAD without collaterals (Fig. 3D, arrow 6). He underwent PCI for subacute stent thrombosis (SAST) (Fig. 3E and F).

## Discussion

We report for the first time that coronary artery occlusion at the same segment in a patient showed different ECG changes.

\* Corresponding author at: Department of Cardiology, Cardiovascular Center, National Hospital Organization Kumamoto Medical Center, 1-5 Ninomaru, Chuo-ku, Kumamoto 860-0008, Japan. Tel.: +81 96 353 6501; fax: +81 96 325 2519.

E-mail addresses: [tsuyohonda-circ@umin.ac.jp](mailto:tsuyohonda-circ@umin.ac.jp), [thonda@kumamoto2.hosp.go.jp](mailto:thonda@kumamoto2.hosp.go.jp) (T. Honda).



**Fig. 1.** Electrocardiogram (ECG) on admission and at the time of subacute stent thrombosis (SAST). (A) ECG on admission and (B) ECG at the time of SAST.

Although his ECG on admission showed ST-segment elevation in the inferior leads and ST-segment depression in the V2–V4 leads (Figs. 1A and 2), his ECG at four days after primary PCI showed precordial ST elevation (Figs. 1B and 2). Interestingly, the culprit lesion in these coronary events was the same segment, proximal LAD.

Inferior ST-segment elevation during anterior wall acute myocardial infarction (AMI) due to LAD coronary artery occlusion is uncommon [3,4]. Usually, 2 conditions are thought to be necessary for these findings: relatively small mass of ischemic anterior wall myocardium, resulting in a weaker anterior injury current and less reciprocal inferior ST-segment depression, and a concomitant inferior wall transmural ischemia that further shifts the inferior ST segments upward. According to other studies, inferior ST-segment elevation was related to a distal LAD stenosis or a wrapped LAD artery [1,2].

In our case report, first ECG might be associated with a weaker anterior ischemia due to collaterals and a strong ischemia due to a wrapped LAD artery. It might be associated with rich collaterals from RCA and LCx to middle segment of LAD and diagonal branch and fewer collaterals to apical segment of LAD. This unusual pattern was previously presented by Brunetti et al. However, a pathophysiological explanation for this peculiar ECG pattern was explained with distal embolization into the distal, inferior part either of the LAD or LCx, or a concomitant spasm of the RCA because they did not undertake emergent coronary angiography [5]. In our patient, rich collaterals from the LCx and RCA supplied the anterior wall and the total occlusion of the wrapped LAD caused an ischemia of the inferior wall.

The second ECG shows the complete occlusion of the proximal LAD. This was explained with an ischemia of anterior wall, because

Download English Version:

<https://daneshyari.com/en/article/5984633>

Download Persian Version:

<https://daneshyari.com/article/5984633>

[Daneshyari.com](https://daneshyari.com)