

Accepted Manuscript

Tilt table testing in neurology and clinical neurophysiology

D.P. Saal, R.D. Thijs, J.G. van Dijk

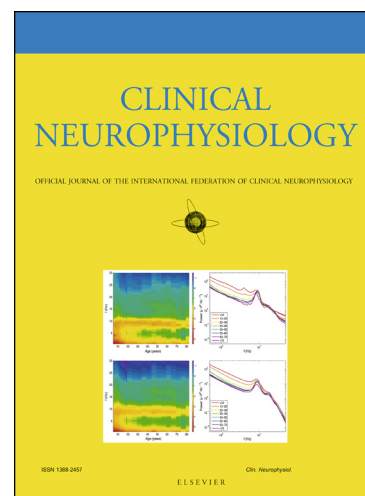
PII: S1388-2457(15)00793-2

DOI: <http://dx.doi.org/10.1016/j.clinph.2015.07.037>

Reference: CLINPH 2007606

To appear in: *Clinical Neurophysiology*

Accepted Date: 23 July 2015



Please cite this article as: Saal, D.P., Thijs, R.D., van Dijk, J.G., Tilt table testing in neurology and clinical neurophysiology, *Clinical Neurophysiology* (2015), doi: <http://dx.doi.org/10.1016/j.clinph.2015.07.037>

This is a PDF file of an unedited manuscript that has been accepted for publication. As a service to our customers we are providing this early version of the manuscript. The manuscript will undergo copyediting, typesetting, and review of the resulting proof before it is published in its final form. Please note that during the production process errors may be discovered which could affect the content, and all legal disclaimers that apply to the journal pertain.

Tilt table testing in neurology and clinical neurophysiology

DP Saal (1), RD Thijs (1,2), JG van Dijk (1)

(1) Dept. of Neurology & Clinical Neurophysiology

Leiden University Medical Centre

Leiden, the Netherlands

(2) Epilepsy Institute in the Netherlands (SEIN)

Heemstede, the Netherlands

Corresponding author:

Dirk Saal

Department of Neurology and Clinical Neurophysiology

Leiden University Medical Centre

Albinusdreef 2

2300 RC Leiden

The Netherlands

Tel.: +31 71 5266524

Fax: +31 71 5264466

E-mail: d.p.saal@lumc.nl

Download English Version:

<https://daneshyari.com/en/article/6007513>

Download Persian Version:

<https://daneshyari.com/article/6007513>

[Daneshyari.com](https://daneshyari.com)