

Accepted Manuscript

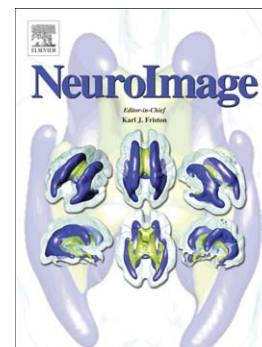
Multiple neural representations of elementary logical connectives

Giosuè Baggio, Paolo Cherubini, Doris Pischedda, Anna Blumenthal,
John-Dylan Haynes, Carlo Reverberi

PII: S1053-8119(16)30101-X
DOI: doi: [10.1016/j.neuroimage.2016.04.061](https://doi.org/10.1016/j.neuroimage.2016.04.061)
Reference: YNIMG 13147

To appear in: *NeuroImage*

Received date: 3 September 2015
Revised date: 20 March 2016
Accepted date: 26 April 2016



Please cite this article as: Baggio, Giosuè, Cherubini, Paolo, Pischedda, Doris, Blumenthal, Anna, Haynes, John-Dylan, Reverberi, Carlo, Multiple neural representations of elementary logical connectives, *NeuroImage* (2016), doi: [10.1016/j.neuroimage.2016.04.061](https://doi.org/10.1016/j.neuroimage.2016.04.061)

This is a PDF file of an unedited manuscript that has been accepted for publication. As a service to our customers we are providing this early version of the manuscript. The manuscript will undergo copyediting, typesetting, and review of the resulting proof before it is published in its final form. Please note that during the production process errors may be discovered which could affect the content, and all legal disclaimers that apply to the journal pertain.

Multiple neural representations of elementary logical connectives

Giosuè Baggio^{1,2}, Paolo Cherubini^{3,4}, Doris Pischcedda^{3,4,5,7}, Anna Blumenthal^{2,6}, John-Dylan Haynes^{5,7,8,9,10}, Carlo Reverberi^{3,4*}

¹ Language Acquisition and Language Processing Lab, Department of Language and Literature, Norwegian University of Science and Technology, 7491 Trondheim, Norway

² SISSA International School for Advanced Studies, 34136 Trieste, Italy

³ Department of Psychology, University of Milano-Bicocca, 20126 Milan, Italy

⁴ NeuroMi- Milan Center for Neuroscience, 20126 Milan, Italy

⁵ Bernstein Center for Computational Neuroscience Berlin, Charité-Universitätsmedizin, 10115 Berlin, Germany

⁶ The Brain and Mind Institute, Western University, N6A 5B7 London, Canada

⁷ Berlin Center for Advanced Neuroimaging, Charité-Universitätsmedizin, 10119 Berlin, Germany

⁸ Berlin School of Mind and Brain, Humboldt Universität zu Berlin, 10117 Berlin, Germany

⁹ Excellence Cluster NeuroCure, Charité-Universitätsmedizin, 10117 Berlin, Germany

¹⁰ Department of Psychology, Humboldt Universität zu Berlin, 12489 Berlin, Germany

*Corresponding author:

Carlo Reverberi

Department of Psychology

University of Milano-Bicocca

Piazza dell'Ateneo Nuovo, 1

20126 Milan, Italy

E-mail: carlo.reverberi@unimib.it

Phone: 0039 02 64483849

Running title: The representation of logical connectives

Download English Version:

<https://daneshyari.com/en/article/6023248>

Download Persian Version:

<https://daneshyari.com/article/6023248>

[Daneshyari.com](https://daneshyari.com)