

Accepted Manuscript

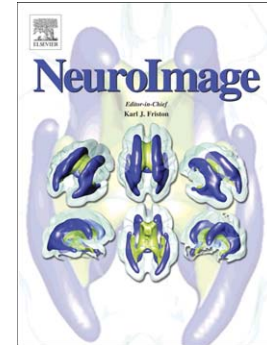
Estimating repetitive spatiotemporal patterns from resting-state brain activity data

Yusuke Takeda, Nobuo Hiroe, Okito Yamashita, Masa-aki Sato

PII: S1053-8119(16)00211-1
DOI: doi: [10.1016/j.neuroimage.2016.03.014](https://doi.org/10.1016/j.neuroimage.2016.03.014)
Reference: YNIMG 13018

To appear in: *NeuroImage*

Received date: 31 July 2015
Accepted date: 4 March 2016



Please cite this article as: Takeda, Yusuke, Hiroe, Nobuo, Yamashita, Okito, Sato, Masa-aki, Estimating repetitive spatiotemporal patterns from resting-state brain activity data, *NeuroImage* (2016), doi: [10.1016/j.neuroimage.2016.03.014](https://doi.org/10.1016/j.neuroimage.2016.03.014)

This is a PDF file of an unedited manuscript that has been accepted for publication. As a service to our customers we are providing this early version of the manuscript. The manuscript will undergo copyediting, typesetting, and review of the resulting proof before it is published in its final form. Please note that during the production process errors may be discovered which could affect the content, and all legal disclaimers that apply to the journal pertain.

Estimating repetitive spatiotemporal patterns from resting-state
brain activity data

Yusuke Takeda, Nobuo Hiroe, Okito Yamashita, Masa-aki Sato

*Department of Computational Brain Imaging, ATR Neural Information Analysis
Laboratories, 2-2-2 Hikaridai, Seika-cho, Soraku-gun, Kyoto 619-0288, Japan*

Address correspondence to:
Yusuke Takeda, Ph.D.
Department of Computational Brain Imaging
ATR Neural Information Analysis Laboratories
2-2-2 Hikaridai, Seika-cho, Soraku-gun
Kyoto 619-0288, Japan
Phone: +81-774-95-1199
Fax: +81-774-95-1259
E-mail: takeda@atr.jp

Download English Version:

<https://daneshyari.com/en/article/6023569>

Download Persian Version:

<https://daneshyari.com/article/6023569>

[Daneshyari.com](https://daneshyari.com)