

Accepted Manuscript

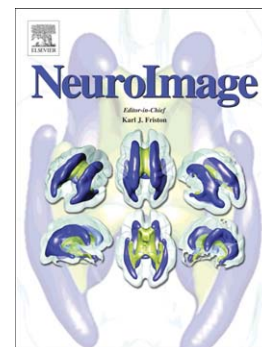
Prediction of Brain Maturity in Infants Using Machine-Learning Algorithms

Christopher D. Smyser, Nico U.F. Dosenbach, Tara A. Smyser, Abraham Z. Snyder, Cynthia E. Rogers, Terrie E. Inder, Bradley L. Schlaggar, Jeffrey J. Neil

PII: S1053-8119(16)30148-3
DOI: doi: [10.1016/j.neuroimage.2016.05.029](https://doi.org/10.1016/j.neuroimage.2016.05.029)
Reference: YNIMG 13186

To appear in: *NeuroImage*

Received date: 22 June 2015
Revised date: 5 May 2016
Accepted date: 8 May 2016



Please cite this article as: Smyser, Christopher D., Dosenbach, Nico U.F., Smyser, Tara A., Snyder, Abraham Z., Rogers, Cynthia E., Inder, Terrie E., Schlaggar, Bradley L., Neil, Jeffrey J., Prediction of Brain Maturity in Infants Using Machine-Learning Algorithms, *NeuroImage* (2016), doi: [10.1016/j.neuroimage.2016.05.029](https://doi.org/10.1016/j.neuroimage.2016.05.029)

This is a PDF file of an unedited manuscript that has been accepted for publication. As a service to our customers we are providing this early version of the manuscript. The manuscript will undergo copyediting, typesetting, and review of the resulting proof before it is published in its final form. Please note that during the production process errors may be discovered which could affect the content, and all legal disclaimers that apply to the journal pertain.

Title: Prediction of Brain Maturity in Infants Using Machine-Learning Algorithms

Authors: Christopher D. Smyser MD^{a,b,c}, Nico U.F. Dosenbach MD,PhD^a, Tara A. Smyser MSE^d, Abraham Z. Snyder MD,PhD^{a,c}, Cynthia E. Rogers, MD^d, Terrie E. Inder MD^e, Bradley L. Schlaggar MD,PhD^{a,b,c,d,f} and Jeffrey J. Neil MD,PhD^g

^aDepartment of Neurology, Washington University School of Medicine
660 South Euclid Ave., Saint Louis, Missouri 63110-1093 USA
Email: smyserc@neuro.wustl.edu, dosenbachn@neuro.wustl.edu, schlaggarb@neuro.wustl.edu

^bDepartment of Pediatrics, Washington University School of Medicine
660 South Euclid Ave., Saint Louis, Missouri 63110-1093 USA

^cMallinckrodt Institute of Radiology, Washington University School of Medicine
660 South Euclid Ave., Saint Louis, Missouri 63110-1093 USA
Email: avi@npg.wustl.edu

^dDepartment of Psychiatry, Washington University School of Medicine
660 South Euclid Ave., Saint Louis, Missouri 63110-1093 USA
Email: smysert@psychiatry.wustl.edu, rogersc@psychiatry.wustl.edu

^eDepartment of Pediatric Newborn Medicine, Brigham and Women's Hospital
75 Francis Street, Boston, MA 02115 USA
Email: tinder@partners.org

^fDepartment of Neurobiology, Washington University School of Medicine
660 South Euclid Ave., Saint Louis, Missouri 63110-1093 USA

^gDepartment of Neurology, Boston Children's Hospital
333 Longwood Ave., Boston, MA 02115 USA
Email: jeffrey.neil@childrens.harvard.edu

All correspondence should be addressed to:
Christopher D. Smyser, MD
660 South Euclid Avenue
Campus Box 8111
Saint Louis, Missouri, U.S.A. 63110-1093
smyserc@neuro.wustl.edu
Phone: 314.454.6120
Fax: 314.454.2523

Download English Version:

<https://daneshyari.com/en/article/6023622>

Download Persian Version:

<https://daneshyari.com/article/6023622>

[Daneshyari.com](https://daneshyari.com)