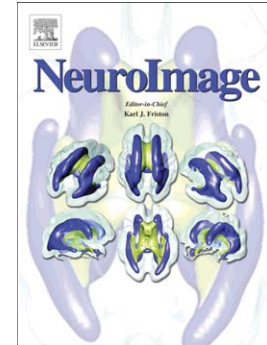


Accepted Manuscript

The Diffusion Tensor Imaging (DTI) Component of the NIH MRI Study of Normal Brain Development (PedsDTI)

Lindsay Walker, Lin-Ching Chang, Amritha Nayak, M. Okan Irfanoglu, Kelly N. Botteron, James McCracken, Robert C. McKinstry, Michael J. Rivkin, Dah-Jyuu Wang, Judith Rumsey, Carlo Pierpaoli



PII: S1053-8119(15)00473-5
DOI: doi: [10.1016/j.neuroimage.2015.05.083](https://doi.org/10.1016/j.neuroimage.2015.05.083)
Reference: YNIMG 12279

To appear in: *NeuroImage*

Accepted date: 27 May 2015

Please cite this article as: Walker, Lindsay, Chang, Lin-Ching, Nayak, Amritha, Irfanoglu, M. Okan, Botteron, Kelly N., McCracken, James, McKinstry, Robert C., Rivkin, Michael J., Wang, Dah-Jyuu, Rumsey, Judith, Pierpaoli, Carlo, The Diffusion Tensor Imaging (DTI) Component of the NIH MRI Study of Normal Brain Development (Peds-DTI), *NeuroImage* (2015), doi: [10.1016/j.neuroimage.2015.05.083](https://doi.org/10.1016/j.neuroimage.2015.05.083)

This is a PDF file of an unedited manuscript that has been accepted for publication. As a service to our customers we are providing this early version of the manuscript. The manuscript will undergo copyediting, typesetting, and review of the resulting proof before it is published in its final form. Please note that during the production process errors may be discovered which could affect the content, and all legal disclaimers that apply to the journal pertain.

The Diffusion Tensor Imaging (DTI) Component of the NIH MRI Study of Normal Brain Development (PedsDTI)

Lindsay Walker^a, Lin-Ching Chang^{a,1}, Amritha Nayak^a, M. Okan Irfanoglu^a, Kelly N Botteron^b, James McCracken^c, Robert C McKinstry^d, Michael J Rivkin^e, Dah-Jyuu Wang^f, Judith Rumsey^g, Carlo Pierpaoli^{a*}, and the Brain Development Cooperative Group

- a. Program on Pediatric Imaging and Tissue Sciences, NICHD, NIH, Bethesda, MD
- b. Washington University in St. Louis, Department of Psychiatry, Saint Louis, MO
- c. Department of Child Psychiatry, University of California in Los Angeles, Los Angeles, CA
- d. Mallinckrodt Institute of Radiology, Washington University School of Medicine, St. Louis, MO
- e. Departments of Neurology, Psychiatry and Radiology, Boston Children's Hospital, Boston, MA
- f. The Children's Hospital of Philadelphia, Philadelphia, PA
- g. Clinical Neuroscience Research Branch, Division of Translational Research, NIMH, NIH, Bethesda, MD
- 1. Department of Electronic Engineering and Computer Science, The Catholic University of America, Washington, District of Columbia, USA.

*** Corresponding Author:**

Carlo Pierpaoli
Program on Pediatric Imaging and Tissue Sciences
Eunice Kennedy Shriver National Institute of Child Health and Human Development (NICHD)
National Institutes of Health (NIH)

13 South Drive, MSC 5772
Bldg. 13, Rm. 3W16
Bethesda, MD 20892-5772
Phone: (301) 402-2289
Fax: (301) 435-5035
cp1a@nih.gov

Prepared for: Call for papers for Neuroimage Special Issue, Sharing the wealth: Brain Imaging Repositories in 2015

Word Count: 3492

Download English Version:

<https://daneshyari.com/en/article/6023839>

Download Persian Version:

<https://daneshyari.com/article/6023839>

[Daneshyari.com](https://daneshyari.com)