

Accepted Manuscript

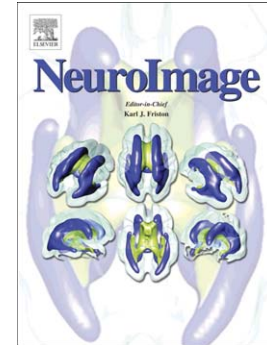
Task- and stimulus-related cortical networks in language production: Exploring similarity of MEG- and fMRI-derived functional connectivity

Mia Liljeström, Claire Stevenson, Jan Kujala, Riitta Salmelin

PII: S1053-8119(15)00626-6
DOI: doi: [10.1016/j.neuroimage.2015.07.017](https://doi.org/10.1016/j.neuroimage.2015.07.017)
Reference: YNIMG 12406

To appear in: *NeuroImage*

Received date: 29 October 2014
Accepted date: 7 July 2015



Please cite this article as: Liljeström, Mia, Stevenson, Claire, Kujala, Jan, Salmelin, Riitta, Task- and stimulus-related cortical networks in language production: Exploring similarity of MEG- and fMRI-derived functional connectivity, *NeuroImage* (2015), doi: [10.1016/j.neuroimage.2015.07.017](https://doi.org/10.1016/j.neuroimage.2015.07.017)

This is a PDF file of an unedited manuscript that has been accepted for publication. As a service to our customers we are providing this early version of the manuscript. The manuscript will undergo copyediting, typesetting, and review of the resulting proof before it is published in its final form. Please note that during the production process errors may be discovered which could affect the content, and all legal disclaimers that apply to the journal pertain.

**Task- and stimulus-related cortical networks in language production:
Exploring similarity of MEG- and fMRI-derived functional connectivity**

Mia Liljeström^{1,2,3,4,*}, Claire Stevenson^{1,2,*}, Jan Kujala^{1,2}, Riitta Salmelin^{1,2}

¹ Department of Neuroscience and Biomedical Engineering, Aalto University, Espoo, Finland

² Aalto NeuroImaging, Aalto University, Espoo, Finland

³ Department of Neurological Sciences, Helsinki University, Helsinki, Finland

⁴ Department of Neurology, Helsinki University Central Hospital, Helsinki, Finland

* Authors contributed equally to this work

Corresponding author:

Mia Liljeström, Dr Sc (Tech)

Department of Neuroscience and Biomedical Engineering, Aalto University, Espoo, Finland

PO BOX 15100, 00076 Aalto, Finland

tel. +358 50 344 2607

fax. +358 9 470 22969

email: mia.liljestrom@aalto.fi

Download English Version:

<https://daneshyari.com/en/article/6024456>

Download Persian Version:

<https://daneshyari.com/article/6024456>

[Daneshyari.com](https://daneshyari.com)