

Accepted Manuscript

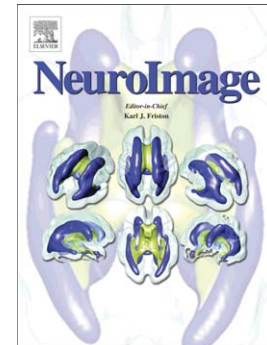
The (in)stability of functional brain network measures across thresholds

Kathleen A. Garrison, Dustin Scheinost, Emily S. Finn, Xilin Shen, R. Todd Constable

PII: S1053-8119(15)00428-0
DOI: doi: [10.1016/j.neuroimage.2015.05.046](https://doi.org/10.1016/j.neuroimage.2015.05.046)
Reference: YNIMG 12241

To appear in: *NeuroImage*

Received date: 31 January 2015
Accepted date: 16 May 2015



Please cite this article as: Garrison, Kathleen A., Scheinost, Dustin, Finn, Emily S., Shen, Xilin, Constable, R. Todd, The (in)stability of functional brain network measures across thresholds, *NeuroImage* (2015), doi: [10.1016/j.neuroimage.2015.05.046](https://doi.org/10.1016/j.neuroimage.2015.05.046)

This is a PDF file of an unedited manuscript that has been accepted for publication. As a service to our customers we are providing this early version of the manuscript. The manuscript will undergo copyediting, typesetting, and review of the resulting proof before it is published in its final form. Please note that during the production process errors may be discovered which could affect the content, and all legal disclaimers that apply to the journal pertain.

The (in)stability of functional brain network measures across thresholds

Kathleen A. Garrison^{1*}, Dustin Scheinost², Emily S. Finn³, Xilin Shen², R. Todd Constable^{2,4}

¹ Department of Psychiatry, Yale School of Medicine

² Department of Diagnostic Radiology, Yale School of Medicine

³ Interdepartmental Neuroscience Program, Yale University

⁴ Department of Neurosurgery, Yale School of Medicine

* To whom correspondence should be addressed:

Kathleen A. Garrison

1 Church Street, Room 730

New Haven, CT 06511

kathleen.garrison@yale.edu

Phone: (203) 737-6232

Fax: (203) 937-3478

Download English Version:

<https://daneshyari.com/en/article/6025192>

Download Persian Version:

<https://daneshyari.com/article/6025192>

[Daneshyari.com](https://daneshyari.com)