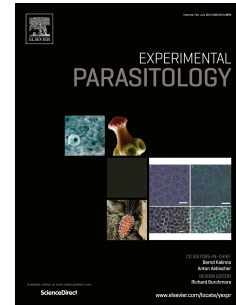


# Accepted Manuscript

Phylogenetic position of *Leishmania* isolates from Khyber Pakhtunkhwa province of Pakistan

Nazma Habib Khan, Louisa A. Messenger, Sobia Wahid, Colin J. Sutherland



PII: S0014-4894(16)30096-0

DOI: [10.1016/j.exppara.2016.05.006](https://doi.org/10.1016/j.exppara.2016.05.006)

Reference: YEXPR 7250

To appear in: *Experimental Parasitology*

Received Date: 8 April 2016

Revised Date: 20 May 2016

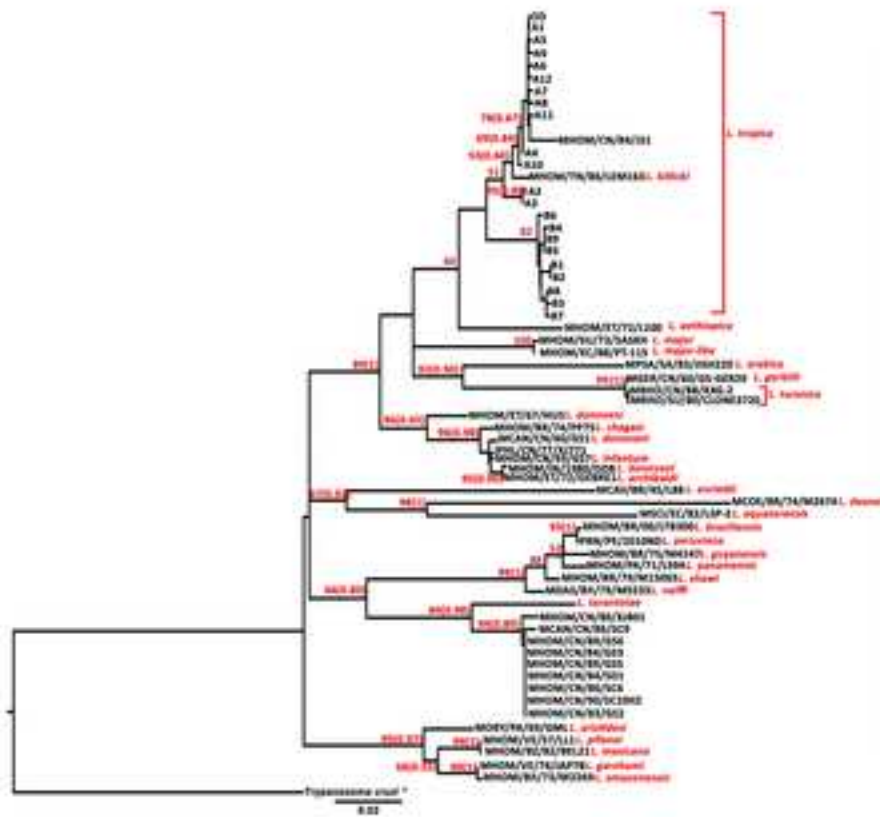
Accepted Date: 21 May 2016

Please cite this article as: Khan, N.H., Messenger, L.A., Wahid, S., Sutherland, C.J., Phylogenetic position of *Leishmania* isolates from Khyber Pakhtunkhwa province of Pakistan, *Experimental Parasitology* (2016), doi: 10.1016/j.exppara.2016.05.006.

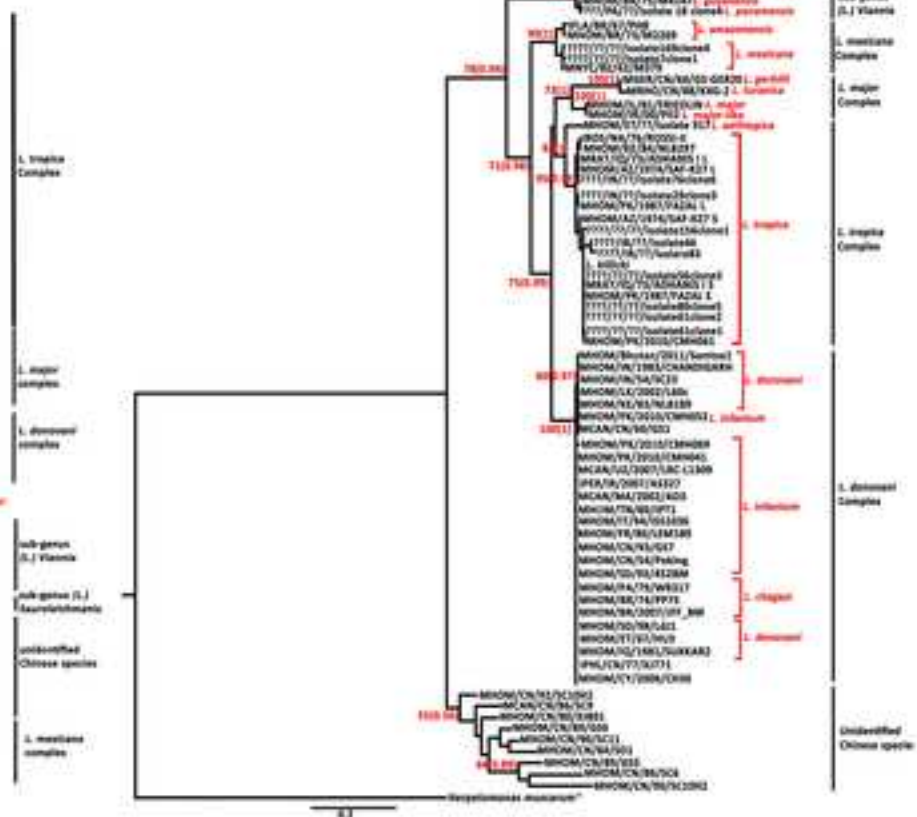
This is a PDF file of an unedited manuscript that has been accepted for publication. As a service to our customers we are providing this early version of the manuscript. The manuscript will undergo copyediting, typesetting, and review of the resulting proof before it is published in its final form. Please note that during the production process errors may be discovered which could affect the content, and all legal disclaimers that apply to the journal pertain.



# Phylogenetic analysis of *Leishmania* genus using (a) Cytochrome B (b) Internal Transcribed Spacer 2 sequences



(a)



(b)

Download English Version:

<https://daneshyari.com/en/article/6290619>

Download Persian Version:

<https://daneshyari.com/article/6290619>

[Daneshyari.com](https://daneshyari.com)