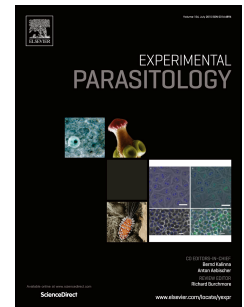


# Accepted Manuscript

The complete mitochondrial genome of *Oxyuris equi*: comparison with other closely related species and phylogenetic implications

Yan Zhang, Wen-Wen Xu, Dong-Hui Guo, Ze-Xuan Liu, Hong Duan, Xin Su, Xue Fu, Dong-Mei Yue, Yuan Gao, Chun-Ren Wang



PII: S0014-4894(15)30047-3

DOI: [10.1016/j.exppara.2015.09.013](https://doi.org/10.1016/j.exppara.2015.09.013)

Reference: YEXPR 7136

To appear in: *Experimental Parasitology*

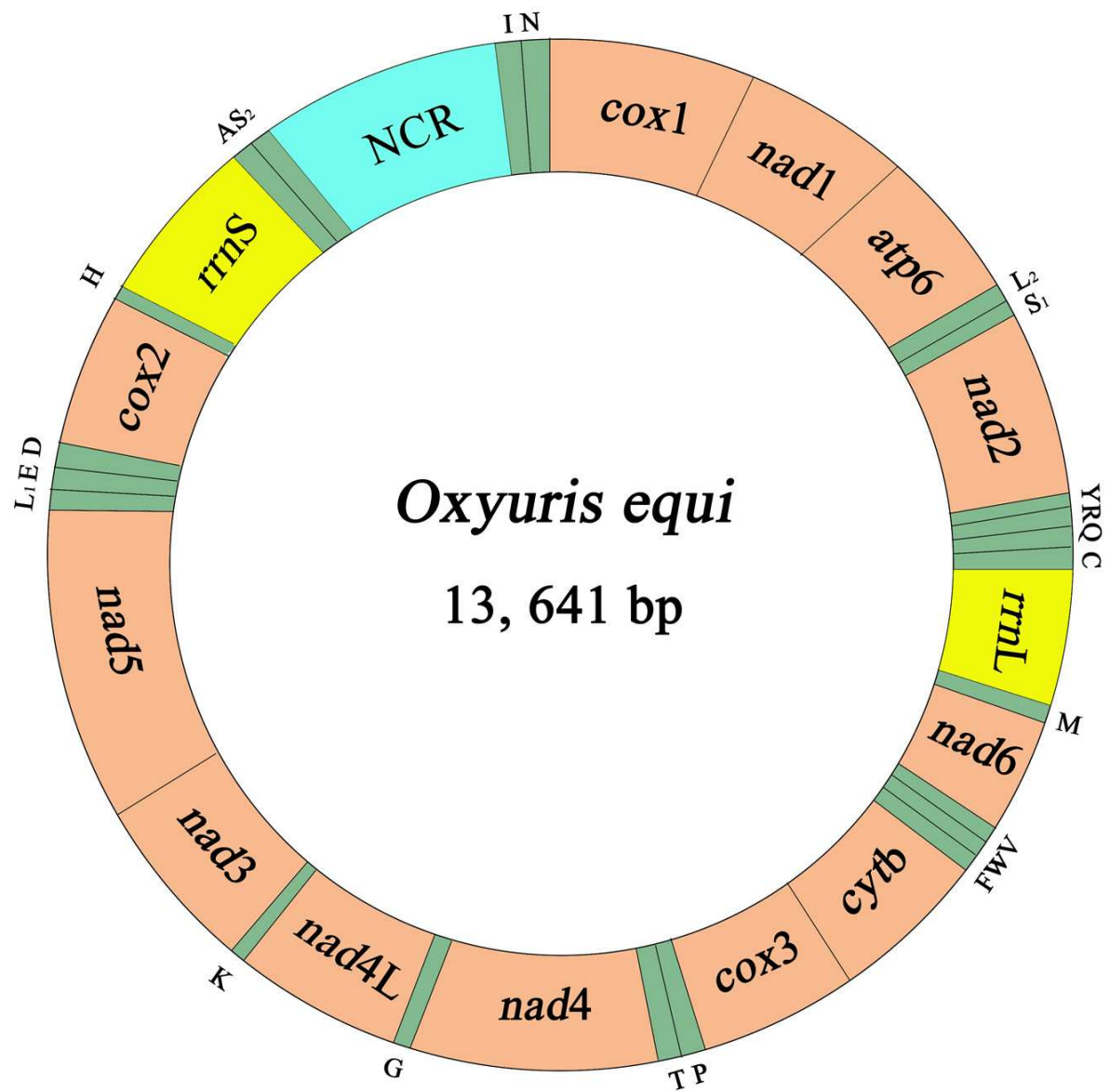
Received Date: 12 March 2015

Revised Date: 13 July 2015

Accepted Date: 24 September 2015

Please cite this article as: Zhang, Y., Xu, W.-W., Guo, D.-H., Liu, Z.-X., Duan, H., Su, X., Fu, X., Yue, D.-M., Gao, Y., Wang, C.-R., The complete mitochondrial genome of *Oxyuris equi*: comparison with other closely related species and phylogenetic implications, *Experimental Parasitology* (2015), doi: 10.1016/j.exppara.2015.09.013.

This is a PDF file of an unedited manuscript that has been accepted for publication. As a service to our customers we are providing this early version of the manuscript. The manuscript will undergo copyediting, typesetting, and review of the resulting proof before it is published in its final form. Please note that during the production process errors may be discovered which could affect the content, and all legal disclaimers that apply to the journal pertain.



Download English Version:

<https://daneshyari.com/en/article/6290704>

Download Persian Version:

<https://daneshyari.com/article/6290704>

[Daneshyari.com](https://daneshyari.com)