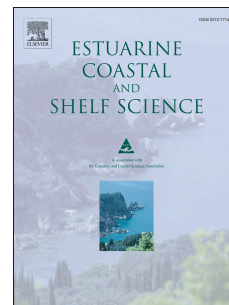


# Accepted Manuscript

Seaweed community response to a massive CO<sub>2</sub> input

Carlos Sangil, Sabrina Clemente, Alberto Brito, Adriana Rodríguez, Marc Balsalobre, José Carlos Mendoza, David Martínez, José Carlos Hernández



PII: S0272-7714(16)30173-1

DOI: [10.1016/j.ecss.2016.05.025](https://doi.org/10.1016/j.ecss.2016.05.025)

Reference: YECSS 5137

To appear in: *Estuarine, Coastal and Shelf Science*

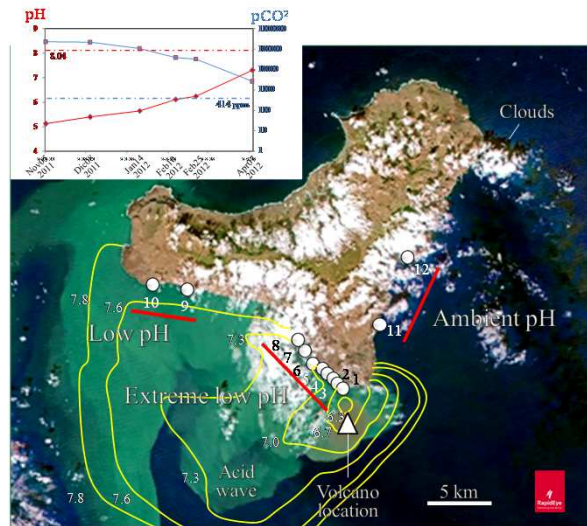
Received Date: 25 December 2015

Revised Date: 27 March 2016

Accepted Date: 31 May 2016

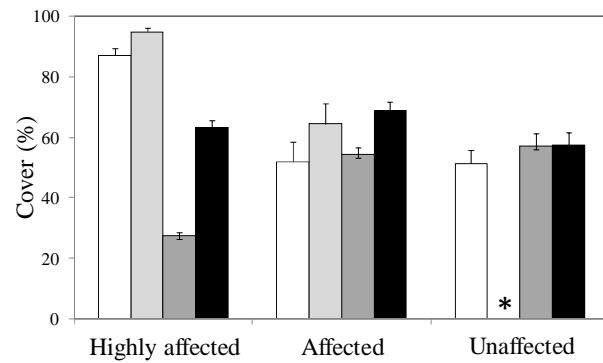
Please cite this article as: Sangil, C., Clemente, S., Brito, A., Rodríguez, A., Balsalobre, M., Mendoza, J.C., Martínez, D., Hernández, J.C., Seaweed community response to a massive CO<sub>2</sub> input, *Estuarine, Coastal and Shelf Science* (2016), doi: 10.1016/j.ecss.2016.05.025.

This is a PDF file of an unedited manuscript that has been accepted for publication. As a service to our customers we are providing this early version of the manuscript. The manuscript will undergo copyediting, typesetting, and review of the resulting proof before it is published in its final form. Please note that during the production process errors may be discovered which could affect the content, and all legal disclaimers that apply to the journal pertain.



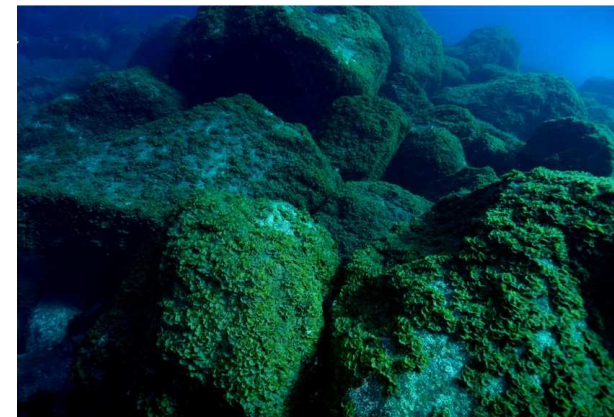
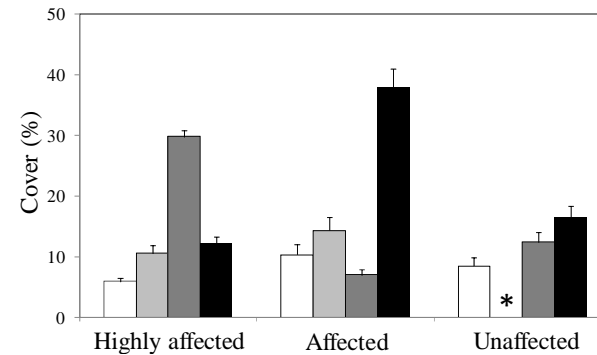
### *Lobophora variegata*

pre-eruption (2005) (2008) eruption (Mar 2012) post-eruption (Oct 2012)



### *Ephemeral seaweeds*

pre-eruption (2005) (2008) eruption (Mar 2012) post-eruption (Oct 2012)



Download English Version:

<https://daneshyari.com/en/article/6384468>

Download Persian Version:

<https://daneshyari.com/article/6384468>

[Daneshyari.com](https://daneshyari.com)