



Research paper

Tectonostratigraphic evolution of the eastern Algerian margin and basin from seismic data and onshore-offshore correlation



Mohamed Arab^{a, b, c, *}, Marina Rabineau^b, Jacques Déverchère^b, Rabah Bracene^a, Djelloul Belhai^c, François Roure^{d, g}, Abbas Marok^e, Boualem Bouyahiaoui^f, Didier Granjeon^d, Paul Andriessen^g, Françoise Sage^h

^a Sonatrach, Exploration Division, Avenue du 1er Novembre, Bat. 'C' BP 68M, 35000 Boumerdes, Algeria

^b Université Brest (UBO), CNRS, Domaines Océaniques, Place Nicolas Copernic, 29280 Plouzané, France

^c Algiers University (USTHB), Bab-Ezzouar, Algiers, Algeria

^d IFP Energies Nouvelles Direction Géologie-Géochimie 1 & 4, Avenue de Bois-Préau, F-92852 Rueil-Malmaison, France

^e Abou-Bekr Belkaid University, Tlemcen, Algeria

^f CRAAG, Route de l'Observatoire B.P 63, Bouzareah, Algiers, Algeria

^g Tectonic Group, Utrecht University, The Netherlands

^h Univ Pierre et Marie Curie, Géoazur, 250 Avenue Albert Einstein, 06560 Valbonne, France

ARTICLE INFO

Article history:

Received 11 February 2016

Received in revised form

7 July 2016

Accepted 26 August 2016

Available online 28 August 2016

Keywords:

Mediterranean sea

Algerian margin

Pre-Messinian units

Seismic facies

Messinian salinity crisis

Syn-rift

Transtension

Tectonic inversion

ABSTRACT

The eastern Algerian basin, part of the Western Mediterranean domain, is a back-arc basin resulting from the SE drift of the Lesser Kabylia block gave rise to continental extension and birth of a new oceanic domain. We aim here to define the structure and tectonostratigraphic evolution of this basin and the adjoining continental margin. Indeed, the absence of wells and the lack of published MCS data kept this area mostly unknown. The crustal architecture (down to the Moho) and seismo-stratigraphy of the sedimentary infill are detailed, emphasizing particularly the pre-Messinian series, by combining a new set of offshore deep penetrating seismic, conventional MCS sections, and wide angle seismic data. Because no well exist offshore we realized new field descriptions of the Late Oligocene and Miocene deposits on land and propose onshore-offshore extrapolation and age correlations. The pre-Messinian series display four main units (PMSU1 to 4) above which Messinian units are consistent with stratigraphic models already proposed for the Mediterranean basin, the deep basin displays units as old as the OMK ("Oligo-Miocène Kabyle") series on land. The basement is shaped by conjugate transcurrent faults striking N120°- N40°, forming a series of rhombic troughs resulting from transtensional tectonics. The coeval E-W extension and NW-SE stretching of the continental crust suggest a radial opening of the Algerian basin during Late Oligocene- Lower Miocene, followed by a progressive uplift of the upper margin after the collision of Lesser Kabylia with Africa. Besides, steep slope of the eastern Algerian margin, downward flexure of the oceanic basin near the margin toe and growth of S-dipping thrusts within the margin evidence a significant Quaternary stress inversion. Overall, this study highlights the complex stress evolution of the East Algerian margin since Oligocene times, as evidenced by significant upward/downward vertical motions and crustal extensional/compressional successions. We summarize this evolution into three main stages: (1) rifting (including sea-floor spreading) at Late Oligocene-Burdigalian in the context of back-arc, (2) collision between AlKaPeCa blocks and Africa at 17 Ma, and post-rift sag basin infill, till Late Tortonian to Messinian, and (3) inversion of the margin and development of flexural basins at Quaternary times.

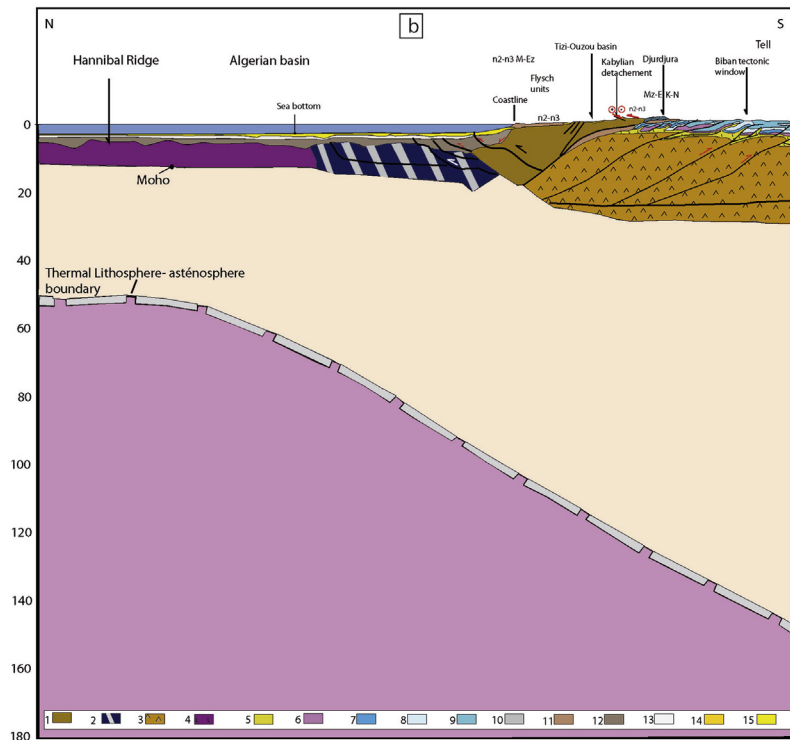
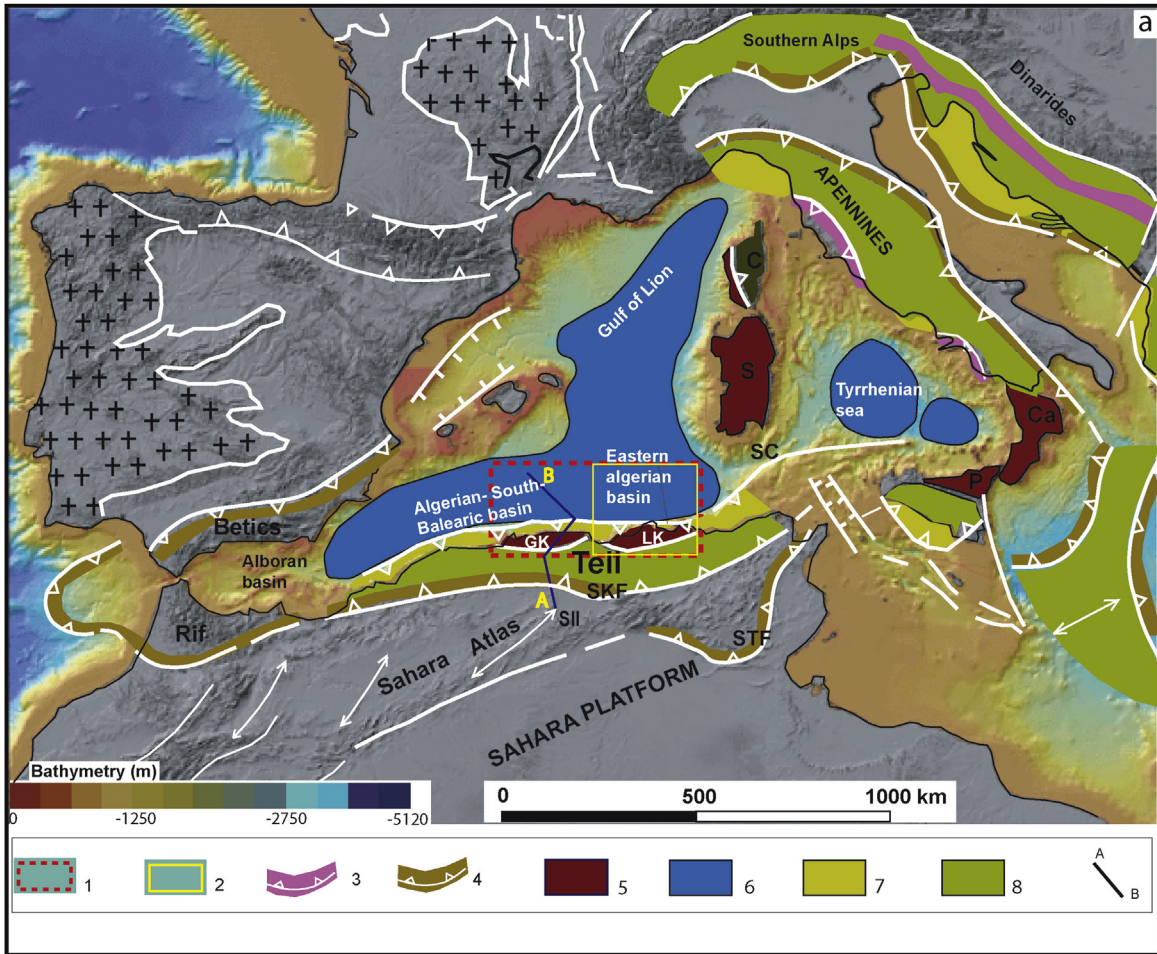
© 2016 Elsevier Ltd. All rights reserved.

1. Introduction

The Eastern Algerian basin is a back-arc basin formed during the Miocene with the drifting of the Kabylia blocks towards the south or south-east (Malinverno and Ryan, 1986; Lonergan and White,

* Corresponding author. Sonatrach, Exploration Division, Avenue du 1er Novembre, Bat. 'C' BP 68M, 35000 Boumerdes, Algeria.

E-mail address: mohamed.arab76@gmail.com (M. Arab).



Download English Version:

<https://daneshyari.com/en/article/6434706>

Download Persian Version:

<https://daneshyari.com/article/6434706>

[Daneshyari.com](https://daneshyari.com)