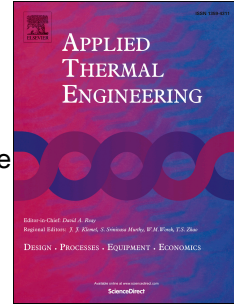


Accepted Manuscript

A coupled stress analysis of the steam generator tube considering the influence of the fluid flow and heat transfer in the primary and secondary sides

Baozhi Sun, Lusong Zheng, Longbin Yang, Yanjun Li, Jianxin Shi, Shanghua Liu, Hongliang Qi



PII: S1359-4311(15)00267-7

DOI: [10.1016/j.applthermaleng.2015.03.043](https://doi.org/10.1016/j.applthermaleng.2015.03.043)

Reference: ATE 6478

To appear in: *Applied Thermal Engineering*

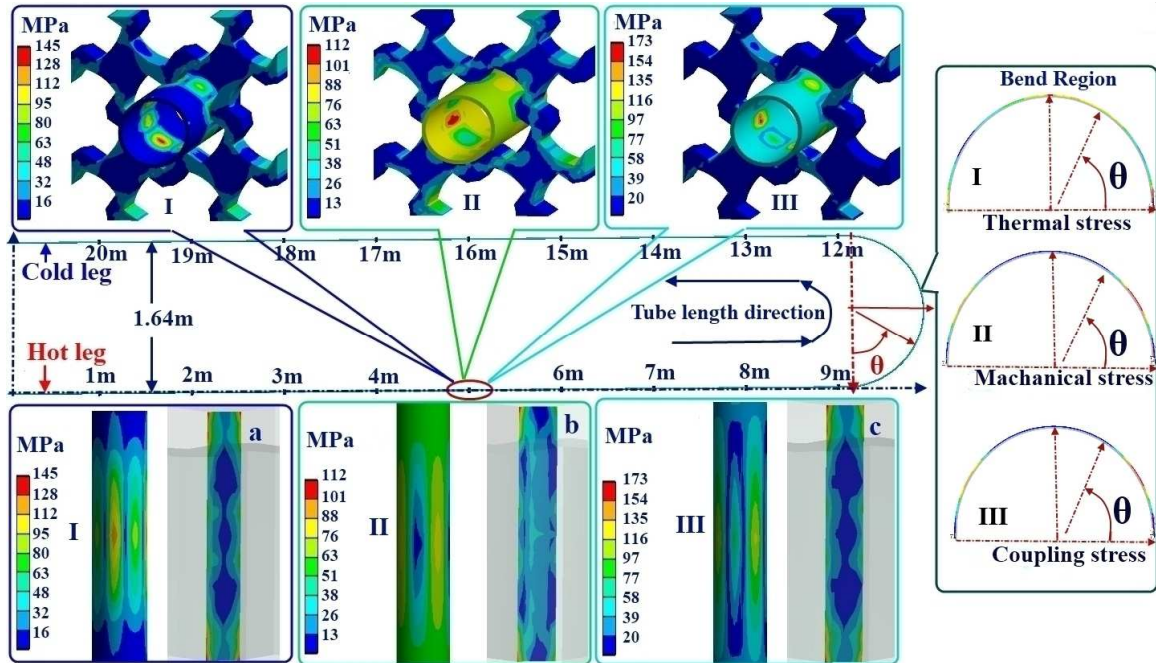
Received Date: 23 November 2014

Revised Date: 5 March 2015

Accepted Date: 17 March 2015

Please cite this article as: B. Sun, L. Zheng, L. Yang, Y. Li, J. Shi, S. Liu, H. Qi, A coupled stress analysis of the steam generator tube considering the influence of the fluid flow and heat transfer in the primary and secondary sides, *Applied Thermal Engineering* (2015), doi: 10.1016/j.applthermaleng.2015.03.043.

This is a PDF file of an unedited manuscript that has been accepted for publication. As a service to our customers we are providing this early version of the manuscript. The manuscript will undergo copyediting, typesetting, and review of the resulting proof before it is published in its final form. Please note that during the production process errors may be discovered which could affect the content, and all legal disclaimers that apply to the journal pertain.



Download English Version:

<https://daneshyari.com/en/article/645278>

Download Persian Version:

<https://daneshyari.com/article/645278>

[Daneshyari.com](https://daneshyari.com)