

# Accepted Manuscript

Functional differences between healthy and diabetic endothelial cells on topographical cues

Marie F.A. Cutiongco, Bryan M.X. Chua, Dawn J.H. Neo, Muhammad Rizwan, Evelyn K.F. Yim



PII: S0142-9612(17)30686-5

DOI: [10.1016/j.biomaterials.2017.10.037](https://doi.org/10.1016/j.biomaterials.2017.10.037)

Reference: JBMT 18319

To appear in: *Biomaterials*

Received Date: 19 June 2017

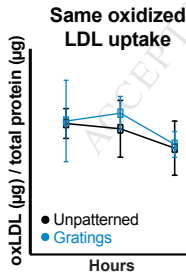
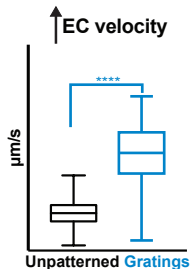
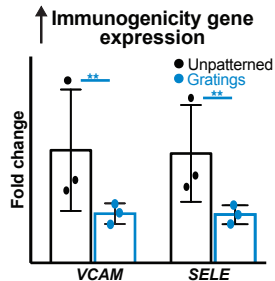
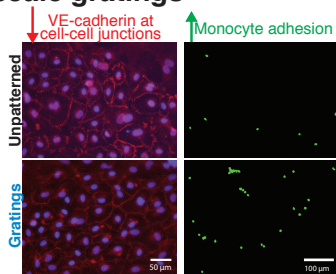
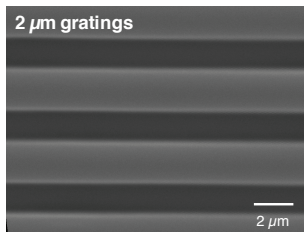
Revised Date: 4 October 2017

Accepted Date: 20 October 2017

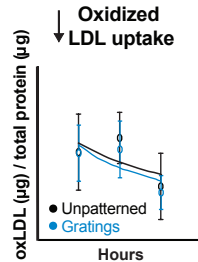
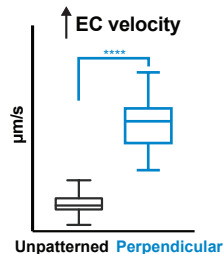
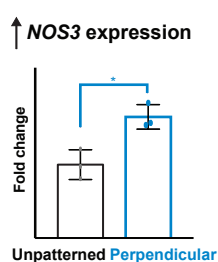
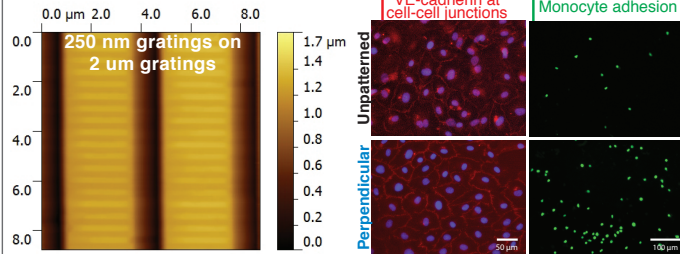
Please cite this article as: Cutiongco MFA, Chua BMX, Neo DJH, Rizwan M, Yim EKF, Functional differences between healthy and diabetic endothelial cells on topographical cues, *Biomaterials* (2017), doi: 10.1016/j.biomaterials.2017.10.037.

This is a PDF file of an unedited manuscript that has been accepted for publication. As a service to our customers we are providing this early version of the manuscript. The manuscript will undergo copyediting, typesetting, and review of the resulting proof before it is published in its final form. Please note that during the production process errors may be discovered which could affect the content, and all legal disclaimers that apply to the journal pertain.

## Healthy endothelial cells on micron-scale gratings



## Diabetic endothelial cells on perpendicularly aligned hierarchical gratings



Download English Version:

<https://daneshyari.com/en/article/6484786>

Download Persian Version:

<https://daneshyari.com/article/6484786>

[Daneshyari.com](https://daneshyari.com)