

Accepted Manuscript

Title: Wastewater-based epidemiology generated forensic information: amphetamine synthesis waste and its impact on a small sewage treatment plant

Authors: Erik Emke, Dennis Vughs, Annemieke Kolkman, Pim de Voogt



PII: S0379-0738(18)30116-6
DOI: <https://doi.org/10.1016/j.forsciint.2018.03.019>
Reference: FSI 9209

To appear in: *FSI*

Received date: 2-9-2017
Revised date: 18-1-2018
Accepted date: 9-3-2018

Please cite this article as: Erik Emke, Dennis Vughs, Annemieke Kolkman, Pim de Voogt, Wastewater-based epidemiology generated forensic information: amphetamine synthesis waste and its impact on a small sewage treatment plant, *Forensic Science International* <https://doi.org/10.1016/j.forsciint.2018.03.019>

This is a PDF file of an unedited manuscript that has been accepted for publication. As a service to our customers we are providing this early version of the manuscript. The manuscript will undergo copyediting, typesetting, and review of the resulting proof before it is published in its final form. Please note that during the production process errors may be discovered which could affect the content, and all legal disclaimers that apply to the journal pertain.

Wastewater-based epidemiology generated forensic information: amphetamine synthesis waste and its impact on a small sewage treatment plant

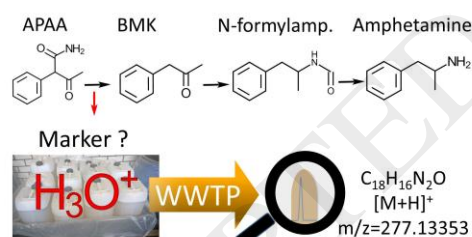
Erik Emke[†], Dennis Vughs[‡], Annemieke Kolkman[‡], Pim de Voogt^{†#}

[†]*KWR Watercycle Research Institute, Chemical Water Quality and Health, P.O. Box 1072, 3430 BB Nieuwegein, The Netherlands.*

[‡]*KWR Watercycle Research Institute, Laboratory for chemical and water quality analysis, P.O. Box 1072, 3430 BB Nieuwegein, The Netherlands.*

[#]*Institute for Biodiversity and Ecosystem Dynamics, University of Amsterdam, P.O. Box 94248, 1090 GE Amsterdam, The Netherlands*

Graphical abstract



Highlights:

- Malfunctioning of a small domestic wastewater treatment plant
- Fly-tipping of chemical waste originating from an amphetamine synthesis
- Pre-precursor of Amphetamine: APAA was confirmed; a route specific marker proposed.
- Non-target screening was used to chemically profile wastewater
- Chemical profiles in wastewater for tracking illicit drug productions sites

Download English Version:

<https://daneshyari.com/en/article/6551158>

Download Persian Version:

<https://daneshyari.com/article/6551158>

[Daneshyari.com](https://daneshyari.com)