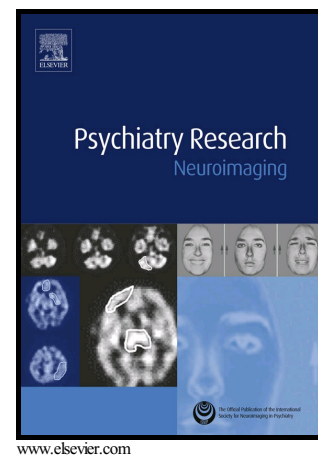


Individuals with more severe depression fail to sustain nucleus accumbens activity to preferred music over time

Lisanne M. Jenkins, Kristy A. Skerrett, Sophie R. DelDonno, Víctor G. Patrón, Kortni K. Meyers, Scott Peltier, Jon-Kar Zubieta, Scott A. Langenecker, Monica N. Starkman



PII: S0925-4927(17)30108-7
DOI: <https://doi.org/10.1016/j.psychresns.2018.03.002>
Reference: PSYN10795

To appear in: *Psychiatry Research: Neuroimaging*

Received date: 4 April 2017
Revised date: 20 February 2018
Accepted date: 2 March 2018

Cite this article as: Lisanne M. Jenkins, Kristy A. Skerrett, Sophie R. DelDonno, Víctor G. Patrón, Kortni K. Meyers, Scott Peltier, Jon-Kar Zubieta, Scott A. Langenecker and Monica N. Starkman, Individuals with more severe depression fail to sustain nucleus accumbens activity to preferred music over time, *Psychiatry Research: Neuroimaging*, <https://doi.org/10.1016/j.psychresns.2018.03.002>

This is a PDF file of an unedited manuscript that has been accepted for publication. As a service to our customers we are providing this early version of the manuscript. The manuscript will undergo copyediting, typesetting, and review of the resulting galley proof before it is published in its final citable form. Please note that during the production process errors may be discovered which could affect the content, and all legal disclaimers that apply to the journal pertain.

**Individuals with more severe depression fail to sustain nucleus accumbens activity
to preferred music over time**

Lisanne M. Jenkins^a, Kristy A. Skerrett^a, Sophie R. DelDonno^a, Víctor G. Patrón^b, Kortni K. Meyers^c, Scott Peltier^d, Jon-Kar Zubieta^c, Scott A. Langenecker^{*a,c}, Monica N. Starkman^c

^aDepartment of Psychiatry, The University of Illinois at Chicago, Chicago, IL, USA

^bRush University Medical Center, Chicago, IL, USA

^cDepartment of Psychiatry, The University of Michigan, Ann Arbor, MI, USA

^dDepartment of Biomedical Engineering, The University of Michigan, Ann Arbor, MI, USA

*Corresponding author: Scott Langenecker

Email: slangenecker@psych.uic.edu

Phone: 312-996-0085

Postal address: Department of Psychiatry, The University of Illinois, Chicago, 1601 W Taylor St, M/C 912, Chicago, IL, 60612.

Download English Version:

<https://daneshyari.com/en/article/6816827>

Download Persian Version:

<https://daneshyari.com/article/6816827>

[Daneshyari.com](https://daneshyari.com)