

# Accepted Manuscript

Large-scale subject-specific cerebral arterial tree modeling using automated parametric mesh generation for blood flow simulation

Mahsa Ghaffari, Kevin Tangen, Ali Alaraj, Xinjian Du, Fady T. Charbel, Andreas A. Linninger



PII: S0010-4825(17)30354-2

DOI: [10.1016/j.combiomed.2017.10.028](https://doi.org/10.1016/j.combiomed.2017.10.028)

Reference: CBM 2821

To appear in: *Computers in Biology and Medicine*

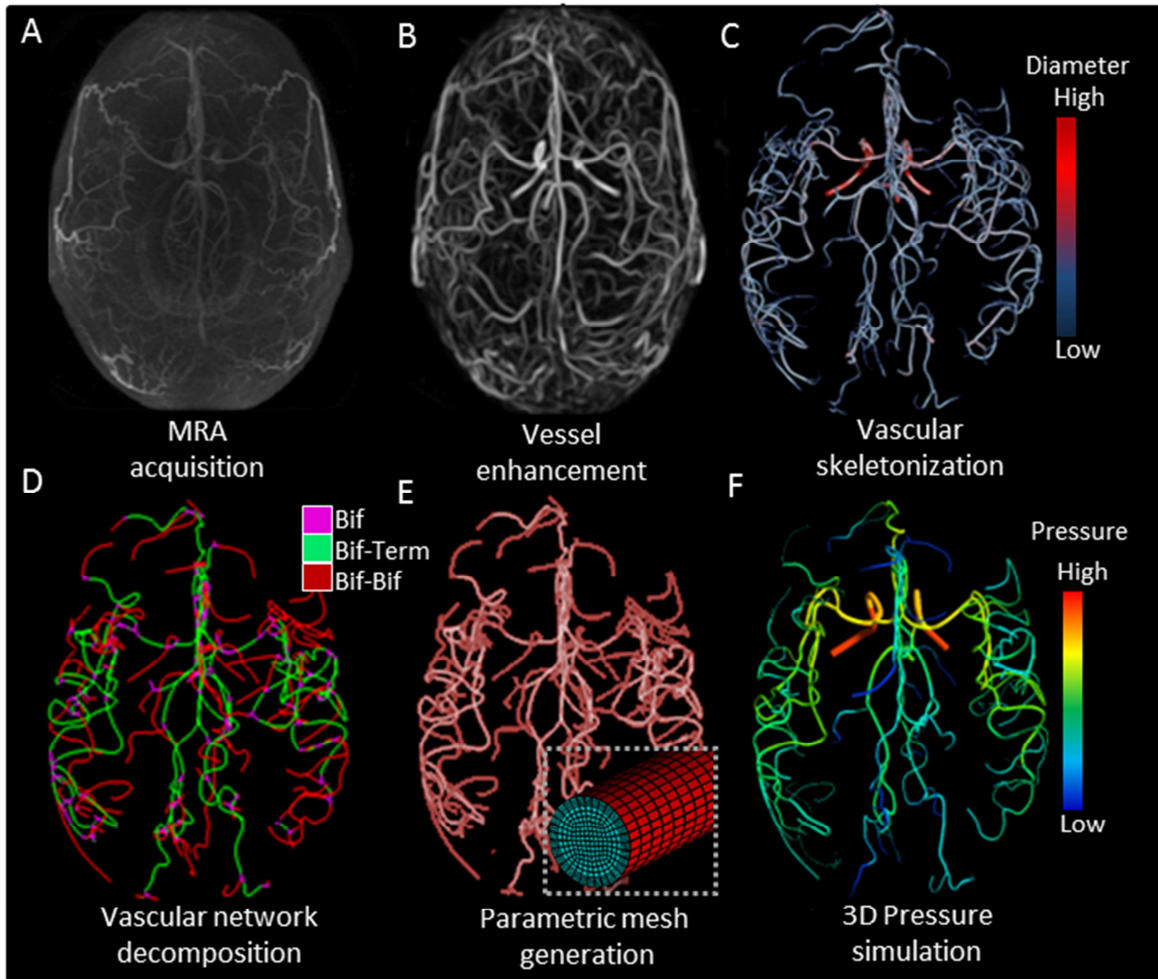
Received Date: 18 July 2017

Revised Date: 23 October 2017

Accepted Date: 23 October 2017

Please cite this article as: M. Ghaffari, K. Tangen, A. Alaraj, X. Du, F.T. Charbel, A.A. Linninger, Large-scale subject-specific cerebral arterial tree modeling using automated parametric mesh generation for blood flow simulation, *Computers in Biology and Medicine* (2017), doi: 10.1016/j.combiomed.2017.10.028.

This is a PDF file of an unedited manuscript that has been accepted for publication. As a service to our customers we are providing this early version of the manuscript. The manuscript will undergo copyediting, typesetting, and review of the resulting proof before it is published in its final form. Please note that during the production process errors may be discovered which could affect the content, and all legal disclaimers that apply to the journal pertain.



Download English Version:

<https://daneshyari.com/en/article/6920746>

Download Persian Version:

<https://daneshyari.com/article/6920746>

[Daneshyari.com](https://daneshyari.com)