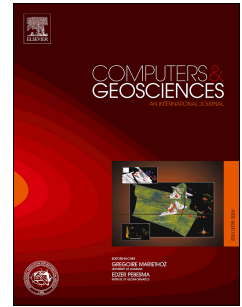


Accepted Manuscript

How do we efficiently generate high-resolution hydraulic models at large numbers of riverine reaches?

Matthew Nahorniak, Joe Wheaton, Carol Volk, Phillip Bailey, Matt Reimer, Eric Wall, Kelly Whitehead, Chris Jordan



PII: S0098-3004(17)31161-5

DOI: [10.1016/j.cageo.2018.07.001](https://doi.org/10.1016/j.cageo.2018.07.001)

Reference: CAGEO 4153

To appear in: *Computers and Geosciences*

Received Date: 9 November 2017

Revised Date: 23 June 2018

Accepted Date: 3 July 2018

Please cite this article as: Nahorniak, M., Wheaton, J., Volk, C., Bailey, P., Reimer, M., Wall, E., Whitehead, K., Jordan, C., How do we efficiently generate high-resolution hydraulic models at large numbers of riverine reaches?, *Computers and Geosciences* (2018), doi: 10.1016/j.cageo.2018.07.001.

This is a PDF file of an unedited manuscript that has been accepted for publication. As a service to our customers we are providing this early version of the manuscript. The manuscript will undergo copyediting, typesetting, and review of the resulting proof before it is published in its final form. Please note that during the production process errors may be discovered which could affect the content, and all legal disclaimers that apply to the journal pertain.

1 **How do we efficiently generate high-resolution hydraulic models at large**
2 **numbers of riverine reaches?**

3
4 Authors¹: Matthew Nahorniak¹, Joe Wheaton², Carol Volk¹, Phillip Bailey³, Matt Reimer³, Eric
5 Wall⁴, Kelly Whitehead¹, Chris Jordan⁵

6
7 ¹ Corresponding Author

8 matt@southforkresearch.org

9 South Fork Research, Inc.

10 44842 SE 145th St.

11 North Bend, WA 98045 USA

12

13 ²Utah State University

14

15 ³North Arrow Research

16

17 ⁴EcoLogical Research, Inc.

18

19 ⁵Northwest Fisheries Science Center

20

¹ Matthew Nahorniak contributed to model conception and design, data interpretation and drafting the manuscript. Joe Wheaton and Eric Wall contributed to the conceptual modeling approach and data interpretation. Carol Volk and Chris Jordan contributed to the conceptual modeling approach and writing. Kelly Whitehead, Matt Reimer, and Philip Bailey contributed to data acquisition, cloud services architecture and data interpretation.

Download English Version:

<https://daneshyari.com/en/article/6922057>

Download Persian Version:

<https://daneshyari.com/article/6922057>

[Daneshyari.com](https://daneshyari.com)