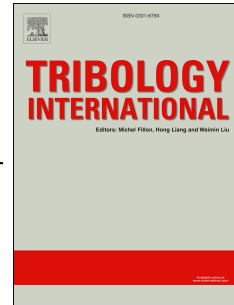


# Accepted Manuscript

Replication of white etching area evolution using novel modified dynamic load pin-on-disc tribometer on bearing steel

K. Sreeraj, P. Ramkumar



PII: S0301-679X(18)30242-1

DOI: [10.1016/j.triboint.2018.05.014](https://doi.org/10.1016/j.triboint.2018.05.014)

Reference: JTRI 5227

To appear in: *Tribology International*

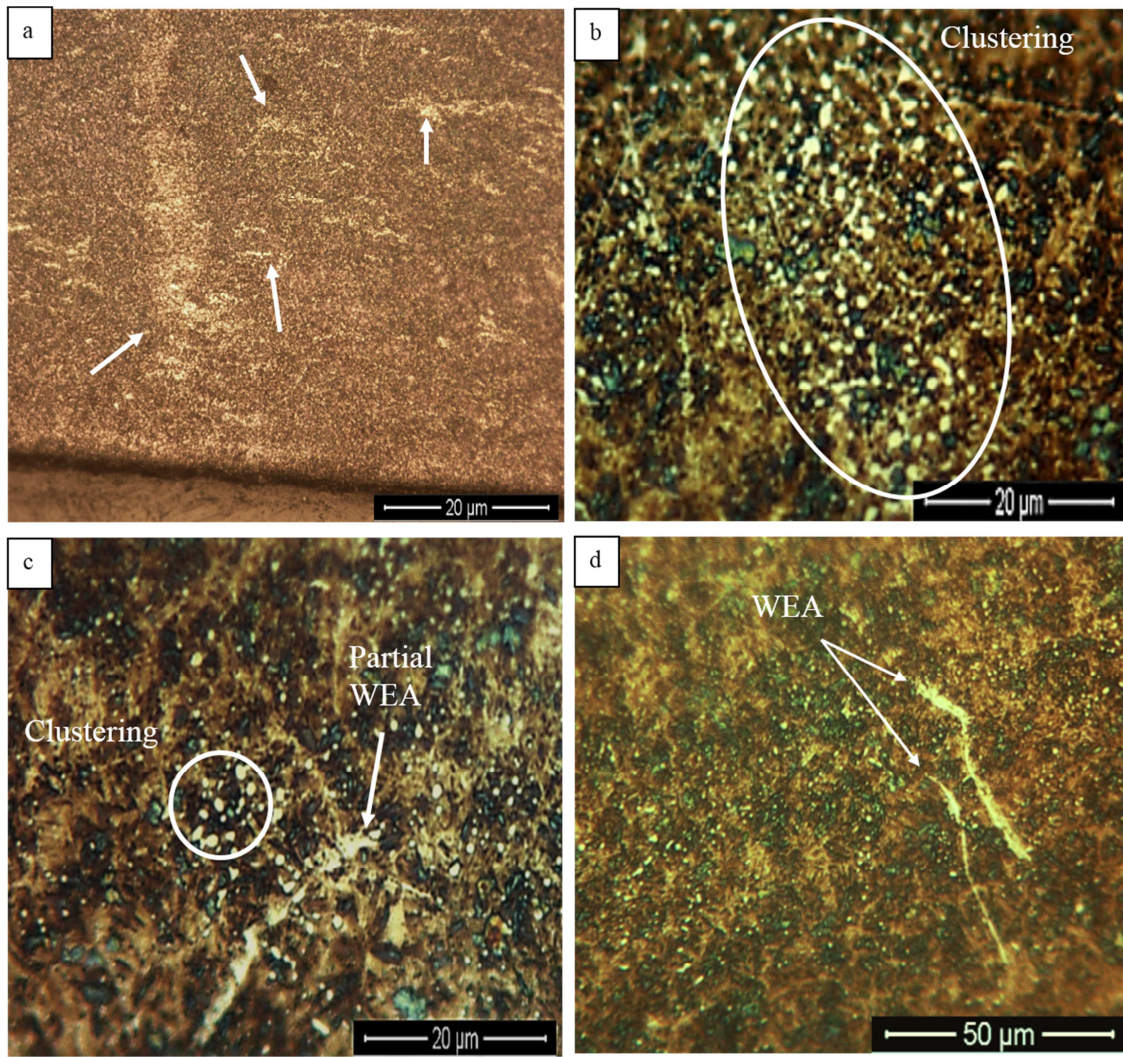
Received Date: 15 November 2017

Revised Date: 4 May 2018

Accepted Date: 8 May 2018

Please cite this article as: Sreeraj K, Ramkumar P, Replication of white etching area evolution using novel modified dynamic load pin-on-disc tribometer on bearing steel, *Tribology International* (2018), doi: 10.1016/j.triboint.2018.05.014.

This is a PDF file of an unedited manuscript that has been accepted for publication. As a service to our customers we are providing this early version of the manuscript. The manuscript will undergo copyediting, typesetting, and review of the resulting proof before it is published in its final form. Please note that during the production process errors may be discovered which could affect the content, and all legal disclaimers that apply to the journal pertain.



Download English Version:

<https://daneshyari.com/en/article/7001561>

Download Persian Version:

<https://daneshyari.com/article/7001561>

[Daneshyari.com](https://daneshyari.com)