

Accepted Manuscript

Social representations and contextual adjustments as two distinct components of the Theory of Mind brain network: Evidence from the REMICS task

Marie-Audrey Lavoie, Damien Vistoli, Stephanie Sutliff, Philip L. Jackson, Amélie M. Achim, Ph.D



PII: S0010-9452(16)30096-X

DOI: [10.1016/j.cortex.2016.04.017](https://doi.org/10.1016/j.cortex.2016.04.017)

Reference: CORTEX 1734

To appear in: *Cortex*


Received Date: 30 June 2015


Revised Date: 16 March 2016

Accepted Date: 22 April 2016

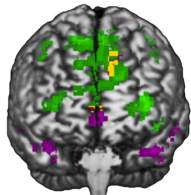
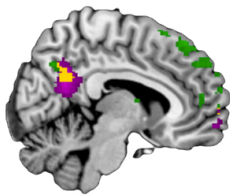
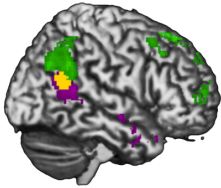
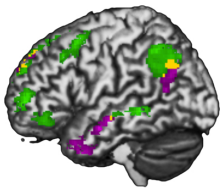
Please cite this article as: Lavoie M-A, Vistoli D, Sutliff S, Jackson PL, Achim AM, Social representations and contextual adjustments as two distinct components of the Theory of Mind brain network: Evidence from the REMICS task, *CORTEX* (2016), doi: 10.1016/j.cortex.2016.04.017.

This is a PDF file of an unedited manuscript that has been accepted for publication. As a service to our customers we are providing this early version of the manuscript. The manuscript will undergo copyediting, typesetting, and review of the resulting proof before it is published in its final form. Please note that during the production process errors may be discovered which could affect the content, and all legal disclaimers that apply to the journal pertain.

 Social representations

 Contextual adjustments

 Overlap



Download English Version:

<https://daneshyari.com/en/article/7312789>

Download Persian Version:

<https://daneshyari.com/article/7312789>

[Daneshyari.com](https://daneshyari.com)