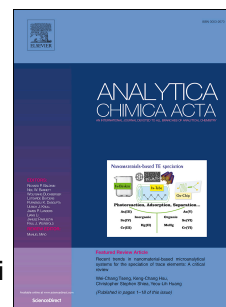


Accepted Manuscript

Bioactivity-guided cut countercurrent chromatography for isolation of lysine-specific demethylase 1 inhibitors from *Scutellaria baicalensis* Georgi

Chao Han, Shanshan Wang, Zhongrui Li, Chen Chen, Jiqin Hou, Dingqiao Xu, Ruizhi Wang, Yaolan Lin, Jianguang Luo, Lingyi Kong



PII: S0003-2670(18)30079-5

DOI: [10.1016/j.aca.2018.01.014](https://doi.org/10.1016/j.aca.2018.01.014)

Reference: ACA 235660

To appear in: *Analytica Chimica Acta*

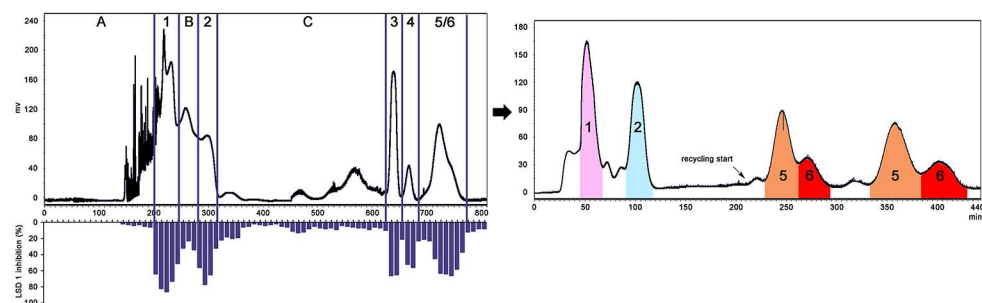
Received Date: 2 July 2017

Revised Date: 11 December 2017

Accepted Date: 2 January 2018

Please cite this article as: C. Han, S. Wang, Z. Li, C. Chen, J. Hou, D. Xu, R. Wang, Y. Lin, J. Luo, L. Kong, Bioactivity-guided cut countercurrent chromatography for isolation of lysine-specific demethylase 1 inhibitors from *Scutellaria baicalensis* Georgi, *Analytica Chimica Acta* (2018), doi: 10.1016/j.aca.2018.01.014.

This is a PDF file of an unedited manuscript that has been accepted for publication. As a service to our customers we are providing this early version of the manuscript. The manuscript will undergo copyediting, typesetting, and review of the resulting proof before it is published in its final form. Please note that during the production process errors may be discovered which could affect the content, and all legal disclaimers that apply to the journal pertain.



Download English Version:

<https://daneshyari.com/en/article/7553873>

Download Persian Version:

<https://daneshyari.com/article/7553873>

[Daneshyari.com](https://daneshyari.com)