

# Accepted Manuscript

Detection of simultaneous multi-mutations using base-quenched probe

Huihui Mao, Guanghua Luo, Jun Zhang, Ning Xu

PII: S0003-2697(17)30510-9

DOI: [10.1016/j.ab.2017.12.011](https://doi.org/10.1016/j.ab.2017.12.011)

Reference: YABIO 12869

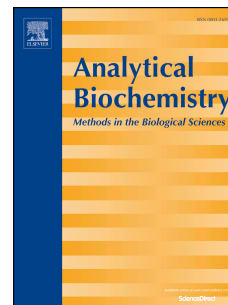
To appear in: *Analytical Biochemistry*

Received Date: 1 December 2017

Accepted Date: 8 December 2017

Please cite this article as: H. Mao, G. Luo, J. Zhang, N. Xu, Detection of simultaneous multi-mutations using base-quenched probe, *Analytical Biochemistry* (2018), doi: 10.1016/j.ab.2017.12.011.

This is a PDF file of an unedited manuscript that has been accepted for publication. As a service to our customers we are providing this early version of the manuscript. The manuscript will undergo copyediting, typesetting, and review of the resulting proof before it is published in its final form. Please note that during the production process errors may be discovered which could affect the content, and all legal disclaimers that apply to the journal pertain.



## **Detection of simultaneous multi-mutations using base-quenched probe**

Huihui Mao<sup>a</sup>, Guanghua Luo<sup>a\*</sup>, Jun Zhang<sup>a</sup>, Ning Xu<sup>b\*\*</sup>

<sup>a</sup> *Comprehensive Laboratory, Changzhou Key Lab of Individualized Diagnosis and Treatment Associated with High Technology Research, the Third Affiliated Hospital of Soochow University, Changzhou 213003, China*

*Address correspondence to authors at: \*G. Luo, Comprehensive Laboratory, the Third Affiliated Hospital of Soochow University, Changzhou 213003, China. Tel.: +86 519 68870619. Email : shineroar@163.com and \*\*N. Xu, Division of Clinical Chemistry and Pharmacology, Department of Laboratory Medicine, Lund University, Lund S-221 85, Sweden. Tel: +46 46 173487; Fax: + 46 46 130064; E-mail: ning.xu@med.lu.se*

Download English Version:

<https://daneshyari.com/en/article/7557142>

Download Persian Version:

<https://daneshyari.com/article/7557142>

[Daneshyari.com](https://daneshyari.com)