



ELSEVIER

Contents lists available at ScienceDirect

Talanta

journal homepage: www.elsevier.com/locate/talanta

Determination of hexabromocyclododecane by flowing atmospheric pressure afterglow mass spectrometry



Marek Smoluch^a, Jerzy Silberring^a, Edward Reszke^b, Joanna Kuc^{c,*}, Adam Grochowalski^c

^a AGH University of Science and Technology, Mickiewicza Ave. 30, 30-059 Cracow, Poland

^b ERTEC-Poland, Rogowska 146/5, 54-440 Wrocław, Poland

^c Cracow University of Technology, Warszawska 24, 31-155 Cracow, Poland

ARTICLE INFO

Article history:

Received 27 December 2013

Received in revised form

3 April 2014

Accepted 15 April 2014

Available online 28 April 2014

Keywords:

Flowing atmospheric-pressure afterglow

Mass spectrometry

Hexabromocyclododecane

Expanded polystyrene

ABSTRACT

The first application of a flowing atmospheric-pressure afterglow ion source for mass spectrometry (FAPA-MS) for the chemical characterization and determination of hexabromocyclododecane (HBCD) is presented.

The samples of technical HBCD and expanded polystyrene foam (EPS) containing HBCD as a flame retardant were prepared by dissolving the appropriate solids in dichloromethane. The ionization of HBCD was achieved with a prototype FAPA source. The ions were detected in the negative-ion mode.

The ions corresponding to a deprotonated HBCD species (m/z 640.7) as well as chlorine (m/z 676.8), nitrite (m/z 687.8) and nitric (m/z 703.8) adducts were observed in the spectra. The observed isotope pattern is characteristic for a compound containing six bromine atoms. This technique is an effective approach to detect HBCD, which is efficiently ionized in a liquid phase, resulting in high detection efficiency and sensitivity.

© 2014 Elsevier B.V. All rights reserved.

1. Introduction

Hexabromocyclododecane (HBCD) is produced in high volumes and is mainly used as a brominated flame retardant additive in expanded (EPS) and extruded (XPS) polystyrene foams used for thermal isolation in the building industry [1]. The compound is noncovalently bound to the material, and can therefore be released into the environment [2,3]. HBCD is toxic because it affects the liver and thyroid [4]; this compound persists in the environment and can bioaccumulate [5].

Because of its properties and increasing worldwide demand [6], HBCD has been recently submitted for inclusion under the UNEP Stockholm Convention on Persistent Organic Pollutants (POPs) and the UNECE Convention on Long-Range Transboundary Air Pollution on POPs [7]. In accordance with the Committee for Risk Assessment (RAC) within the European Chemicals Agency (ECHA) and Directive 67/548/EEC, HBCD is considered as hazardous and is classified as follows: R63 - Possible risk of harm to an unborn child and R64 - May cause harm to breastfed babies [1]. Moreover, in the European Union, HBCD was identified as a substance of very high concern (SVHC) and is currently being reviewed under the registration, evaluation, authorization and restriction of chemicals [8]; this regulation allows only authorized applications for HBCD

after 21 August 2015. The [9] factsheet briefly describes the main regulatory status of HBCD in Europe, Japan, and North America.

The extensive use of HBCD as an additive flame retardant has led to a widespread contamination by this compound in different biotics [10–14] and abiotics [15–18], environmental compartments; therefore, monitoring of this contaminant is advisable. Numerous methods, including gas and liquid chromatography, have been developed to determine HBCD; the results have already been reported and compared [19–24]. However, these methods usually require a multistep, time-consuming procedures for sample handling, including extraction and clean-up. Therefore, the application of rapid mass spectrometric analysis with little or no sample pretreatment is essential. The use of a flowing atmospheric pressure afterglow mass spectrometry (FAPA-MS) ion source is an easy and fast approach for identifying HBCD, which makes it a desirable technique. Various atmospheric-pressure ionization sources have recently been used for direct and rapid mass spectrometric analysis with little or no sample pretreatment. The techniques referred to as ambient desorption/ionization mass spectrometry (ADI-MS) are based on atmospheric-pressure discharges to form ions, thereby directly ionizing samples under ambient conditions [25,26]. Numerous options for analyte desorption/ionization during MS have been described in the literature in recent years after introduction of desorption electrospray ionization (DESI) [27] and direct analysis in real time (DART) [28]. These techniques selectively desorb and ionize analytes, and, when combined with mass spectrometry for detection, these

* Corresponding author. Tel.: +48 126282707; fax: +48 126282036.

E-mail address: jkuc@chemia.pk.edu.pl (J. Kuc).

methods have provided numerous powerful alternatives to chromatographic approaches. The classification of many similar techniques is disputed [25,29,30] and [31] proposed three major categories: spray-based, laser-based, and plasma-based ionization. FAPA is the plasma-based atmospheric-pressure glow discharge ignited between a pin cathode and a plate anode [25,32–35]. Compounds are softly ionized by the reagent ions when samples are exposed to the afterglow. The source is based on helium glow discharge plasma at atmospheric pressure. One of the capillary electrodes excites the He atoms, and the reagent ions pass through the discharge cell, which results in ionization of the analyte molecules. Both positive and negative ion modes can be applied [36].

FAPA discharge is also classified as a glow-to-arc (G-A) technique and is known for its high desorption efficiency and sensitive detection [35]. FAPA discharge produces a significant amount of positive ions, including NO^+ , O_2^+ , N_2^+ and $(\text{H}_2\text{O})_n\text{H}^+$. The protonated water clusters are the most abundant species. The background ions in the negative-ion mode include O_2^- as well as small amounts of OH^- , O^- , HO_2^- , O_3^- , NO_2^- and NO_3^- [35–38]. FAPA sources for MS enable for the analysis of substances with very low thermal stability due to the relatively low temperature. These methods can successfully be used for the rapid analysis of solid, liquid and gaseous samples; therefore, they can be applied to directly analyze pharmaceutical compounds, drugs and food contaminants [33,36,39–41].

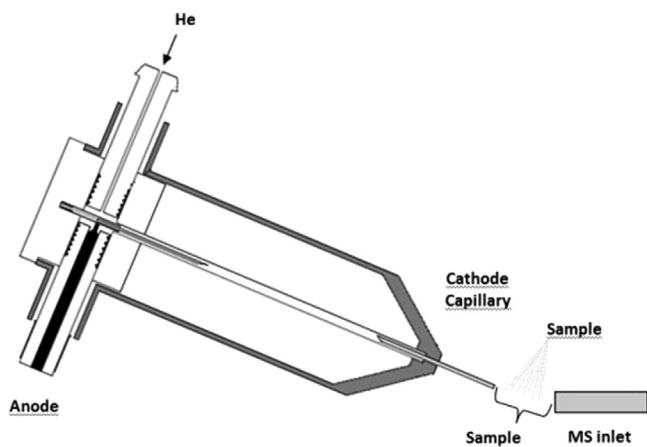


Fig. 1. Diagram of FAPA-MS. The analytes are desorbed/ionized into the gas phase and are transferred from the sample zone to the mass spectrometer inlet, where they are separated by their mass-to-charge (m/z) values and detected.

The main goal of our study was to develop a fast, effective and an inexpensive method for assessing the HBCD content in polystyrene foams as an alternative to the established gas and liquid chromatography methods. In this paper, the first application of the FAPA-MS technique for the chemical determination and characterization of HBCD is presented.

2. Materials and methods

HBCD was determined as the sum of three predominant isomers of α , β and γ using technical-grade HBCD and expanded polystyrene foam containing HBCD as a flame retardant purchased from a Polish Styrofoam factory (Termo Organika, Poland). A sample containing 10 g of expanded polystyrene foam was dissolved in dichloromethane and 7 mg/mL solution was prepared and stored in a sealed vessel at 4 °C.

For quantitative studies, i.e., estimation of sensitivity and preparation of the calibration curve, HBCD solutions have been prepared in dichloromethane and also additionally in matrix, i.e. in 1 mg/mL of polystyrene foam, which does not contain HBCD. In both cases, HBCD was prepared at the following concentrations: 4.69; 9.37; 18.75; 37.5; 75; 150; 300; 600 and 1200 $\mu\text{g/mL}$.

The desorption/ionization of HBCD was achieved with a NOVA011 (ERTEC, Poland) helium-based atmospheric-pressure FAPA source (Fig. 1). The quartz tube on the rear side is axially mounted along a Teflon dielectric that also serves as a compartment for connecting the cables that deliver a high voltage potential to the anode and houses the helium gas fitting. The FAPA source is usually placed approximately 1 cm from the MS inlet, and at an angle approximately 30° from horizontal position. The discharge tube restricts the flow of the plasma stream and helium afterglow. The plasma cavity is integrally connected to a classic TV flyback operating in current mode as the high-voltage generator. The discharge power is adjustable between 3–30 W. The open-circuit voltage (20 kV) ensures that the helium discharge self-ignites; this discharge is continuously delivered at 1.0 L/min. The end of a hollow cathode tube (2 mm O.D., 1.5 mm I.D, and 11 mm outside length) is fitted to the stainless steel body of the cavity equipped with few 8 mm diameter holes for observing the discharge.

The technical HBCD and expanded polystyrene foam solutions were manually sprayed (application volume 10 μL) in a reproducible manner, using simple perfume atomizer, over the sample zone of the FAPA-MS, and ions were detected in the negative-ion mode using a Bruker Esquire 3000 quadrupole ion trap mass spectrometer (Bruker Daltonics, Bremen, Germany). The sample zone was located in 1 cm space between the FAPA ion source and the MS

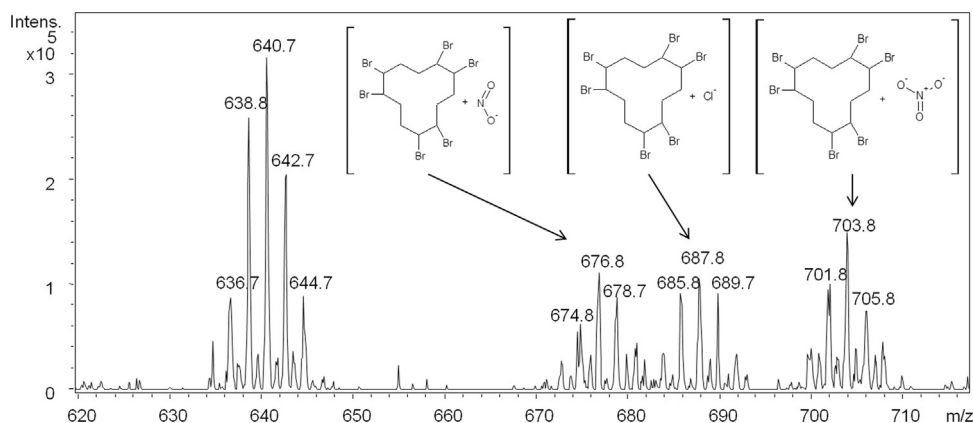


Fig. 2. Spectrum of 10 mg/mL solution of HBCD. An isotope pattern indicating six bromine atoms is observed. The ion at m/z 640.7 attributed to a deprotonated HBCD molecule generates the most intense signal. The obtained HBCD and Cl^- adducts (m/z 676.8), NO_2^- (m/z 687.8) as well as the NO_3^- species (m/z 703.8) generate signals of somewhat lower intensities.

Download English Version:

<https://daneshyari.com/en/article/7679501>

Download Persian Version:

<https://daneshyari.com/article/7679501>

[Daneshyari.com](https://daneshyari.com)