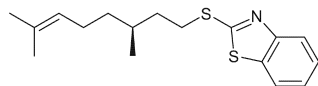


Stereochemistry abstracts

Zhi-Feng Sun, Lu-Nan Zhou, Yifei Meng, Tao Zhang, Zhen-Ting Du *, Huaiji Zheng *

Tetrahedron: Asymmetry 28 (2017) 1562

$[\alpha]_D^{23} = +13.6$ (c 0.12, CHCl₃)
Absolute configuration: (S)



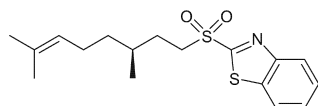
C₁₇H₂₃NS₂

(S)-2-((3,7-Dimethyloct-6-enyl)thio)benzo[d]thiazole

Zhi-Feng Sun, Lu-Nan Zhou, Yifei Meng, Tao Zhang, Zhen-Ting Du *, Huaiji Zheng *

Tetrahedron: Asymmetry 28 (2017) 1562

$[\alpha]_D^{23} = +10.5$ (c 0.12, CHCl₃)
Absolute configuration: (S)



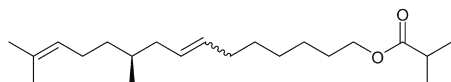
C₁₇H₂₃NO₂S₂

(S)-2-((3,7-Dimethyloct-6-enyl)sulfonyl)benzo[d]thiazole

Zhi-Feng Sun, Lu-Nan Zhou, Yifei Meng, Tao Zhang, Zhen-Ting Du *, Huaiji Zheng *

Tetrahedron: Asymmetry 28 (2017) 1562

$[\alpha]_D^{23} = -2.6$ (c 0.17, CHCl₃)
Absolute configuration: (R)



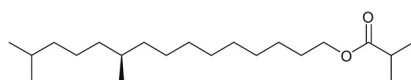
C₂₁H₃₈O₂

(S)-10,14-Dimethylpentadeca-7,13-dien-1-yl isobutyrate

Zhi-Feng Sun, Lu-Nan Zhou, Yifei Meng, Tao Zhang, Zhen-Ting Du *, Huaiji Zheng *

Tetrahedron: Asymmetry 28 (2017) 1562

$[\alpha]_D^{23} = +1.7$ (c 0.1, CHCl₃)
 $[\alpha]_D^{23} = +1.4$ (c 2.3, CHCl₃)
Absolute configuration: (R)



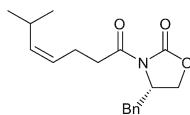
C₂₁H₄₂O₂

(R)-10,14-Dimethylpentadecyl isobutyrate

Zhi-Feng Sun, Lu-Nan Zhou, Yifei Meng, Tao Zhang, Zhen-Ting Du *, Huaiji Zheng *

Tetrahedron: Asymmetry 28 (2017) 1562

$[\alpha]_D^{23} = +12.6$ (c 2.4, CHCl₃)
Absolute configuration: (S)



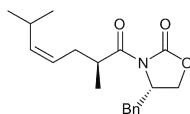
C₁₈H₂₃NO₃

(S,Z)-4-Benzyl-3-(6-methylhept-4-enyl)oxazolidin-2-one

Zhi-Feng Sun, Lu-Nan Zhou, Yifei Meng, Tao Zhang, Zhen-Ting Du *, Huaiji Zheng *

Tetrahedron: Asymmetry 28 (2017) 1562

$[\alpha]_D^{23} = +29.4$ (c 2.4, CHCl₃)
Absolute configuration: (S,S)



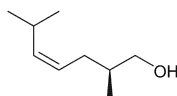
C₁₉H₂₅NO₃

(S)-4-Benzyl-3-((S,Z)-2,6-dimethylhept-4-enyl)oxazolidin-2-one

Zhi-Feng Sun, Lu-Nan Zhou, Yifei Meng, Tao Zhang, Zhen-Ting Du *, Huaiji Zheng *

Tetrahedron: Asymmetry 28 (2017) 1562

$[\alpha]_D^{23} = -1.9$ (c 2.4, CHCl₃)
Absolute configuration: (S)



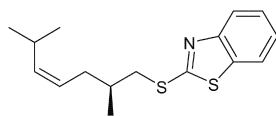
C₉H₁₈NO₃

(S,Z)-2,6-Dimethylhept-4-en-1-ol

Zhi-Feng Sun, Lu-Nan Zhou, Yifei Meng, Tao Zhang, Zhen-Ting Du *, Huaiji Zheng *

Tetrahedron: Asymmetry 28 (2017) 1562

$[\alpha]_D^{23} = -5.9$ (c 2.9, CHCl₃)
Absolute configuration: (S)



C₁₆H₂₁NS₂

(S,Z)-2-((2,6-Dimethylhept-4-enyl)thiobenzp[d]thiazole

Download English Version:

<https://daneshyari.com/en/article/7766781>

Download Persian Version:

<https://daneshyari.com/article/7766781>

[Daneshyari.com](https://daneshyari.com)