

# Accepted Manuscript

New aziridine-based inhibitors of cathepsin L-like cysteine proteases with selectivity for the *Leishmania* cysteine protease LmCPB2.8

Philipp Fey, Roula Chartomatsidou, Werner Kiefer, Jeremy C. Mottram, Christian Kersten, Tanja Schirmeister



PII: S0223-5234(18)30568-3

DOI: [10.1016/j.ejmech.2018.07.012](https://doi.org/10.1016/j.ejmech.2018.07.012)

Reference: EJMECH 10547

To appear in: *European Journal of Medicinal Chemistry*

Received Date: 7 March 2018

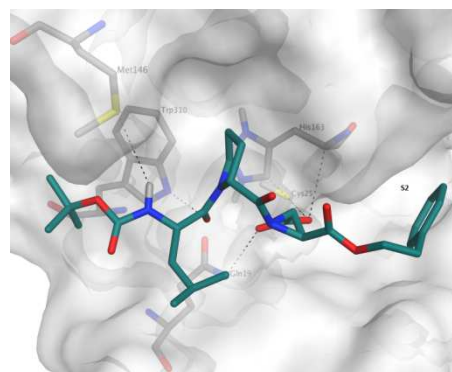
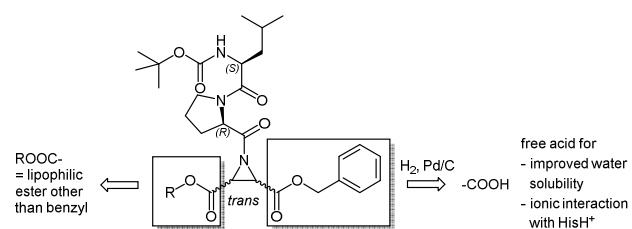
Revised Date: 3 July 2018

Accepted Date: 6 July 2018

Please cite this article as: P. Fey, R. Chartomatsidou, W. Kiefer, J.C. Mottram, C. Kersten, T. Schirmeister, New aziridine-based inhibitors of cathepsin L-like cysteine proteases with selectivity for the *Leishmania* cysteine protease LmCPB2.8, *European Journal of Medicinal Chemistry* (2018), doi: 10.1016/j.ejmech.2018.07.012.

This is a PDF file of an unedited manuscript that has been accepted for publication. As a service to our customers we are providing this early version of the manuscript. The manuscript will undergo copyediting, typesetting, and review of the resulting proof before it is published in its final form. Please note that during the production process errors may be discovered which could affect the content, and all legal disclaimers that apply to the journal pertain.

## Graphical abstract



Download English Version:

<https://daneshyari.com/en/article/7795994>

Download Persian Version:

<https://daneshyari.com/article/7795994>

[Daneshyari.com](https://daneshyari.com)