

# Accepted Manuscript

Identification of a thalidomide derivative that selectively targets tumorigenic liver progenitor cells and comparing its effects with lenalidomide and sorafenib

Ken H. Woo, Scott G. Stewart, Geraldine Kong, Megan L. Finch-Edmondson, Ben Dwyer, Sing Yee Yeung, Lawrence J. Abraham, Sven S. Kampmann, Caryn Elsegood, Nina Tirnitz-Parker, Bernard A. Callus, John K. Olynyk, George C. Yeoh

PII: S0223-5234(16)30189-1

DOI: [10.1016/j.ejmech.2016.03.015](https://doi.org/10.1016/j.ejmech.2016.03.015)

Reference: EJMECH 8440

To appear in: *European Journal of Medicinal Chemistry*

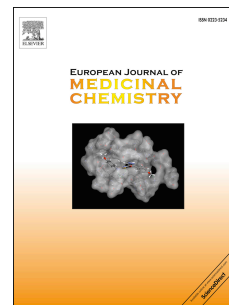
Received Date: 28 September 2015

Revised Date: 18 February 2016

Accepted Date: 4 March 2016

Please cite this article as: K.H Woo, S.G. Stewart, G. Kong, M.L. Finch-Edmondson, B. Dwyer, S.Y. Yeung, L.J. Abraham, S.S. Kampmann, C. Elsegood, N. Tirnitz-Parker, B.A. Callus, J.K. Olynyk, G.C. Yeoh, Identification of a thalidomide derivative that selectively targets tumorigenic liver progenitor cells and comparing its effects with lenalidomide and sorafenib, *European Journal of Medicinal Chemistry* (2016), doi: 10.1016/j.ejmech.2016.03.015.

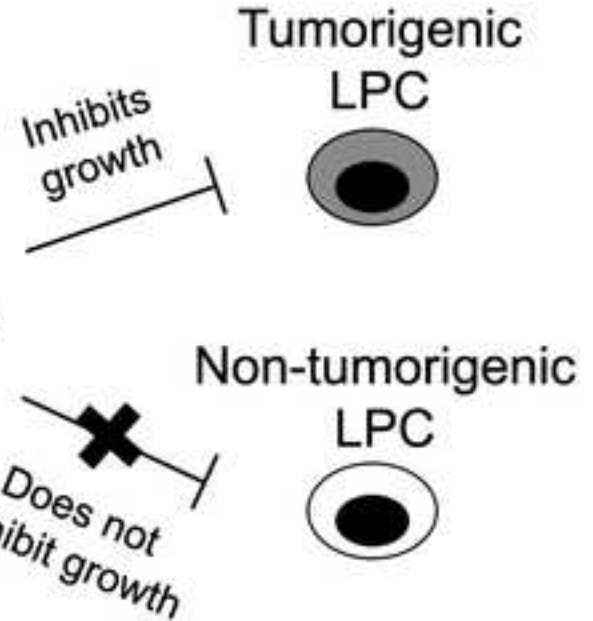
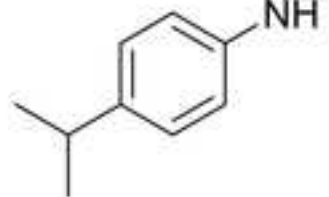
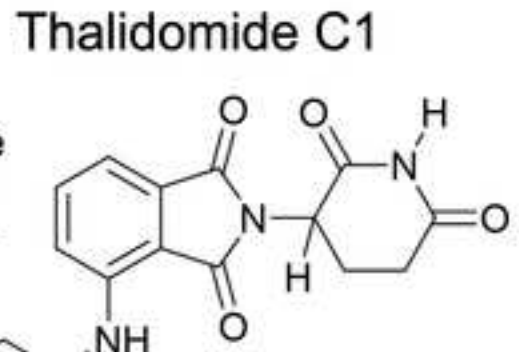
This is a PDF file of an unedited manuscript that has been accepted for publication. As a service to our customers we are providing this early version of the manuscript. The manuscript will undergo copyediting, typesetting, and review of the resulting proof before it is published in its final form. Please note that during the production process errors may be discovered which could affect the content, and all legal disclaimers that apply to the journal pertain.



CRIP T



Most active derivative



LPC= Liver Progenitor Cell

ACC

Download English Version:

<https://daneshyari.com/en/article/7798441>

Download Persian Version:

<https://daneshyari.com/article/7798441>

[Daneshyari.com](https://daneshyari.com)