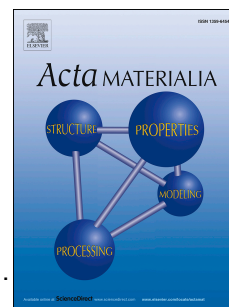


Accepted Manuscript

Impact of compositional gradients on selectivity of dissolvable support structures for directed energy deposited metals

Christopher S. Lefky, Brian Zucker, Abdalla R. Nassar, Timothy W. Simpson, Owen J. Hildreth



PII: S1359-6454(18)30282-9

DOI: [10.1016/j.actamat.2018.04.009](https://doi.org/10.1016/j.actamat.2018.04.009)

Reference: AM 14496

To appear in: *Acta Materialia*

Received Date: 4 October 2017

Revised Date: 4 April 2018

Accepted Date: 4 April 2018

Please cite this article as: C.S. Lefky, B. Zucker, A.R. Nassar, T.W. Simpson, O.J. Hildreth, Impact of compositional gradients on selectivity of dissolvable support structures for directed energy deposited metals, *Acta Materialia* (2018), doi: 10.1016/j.actamat.2018.04.009.

This is a PDF file of an unedited manuscript that has been accepted for publication. As a service to our customers we are providing this early version of the manuscript. The manuscript will undergo copyediting, typesetting, and review of the resulting proof before it is published in its final form. Please note that during the production process errors may be discovered which could affect the content, and all legal disclaimers that apply to the journal pertain.

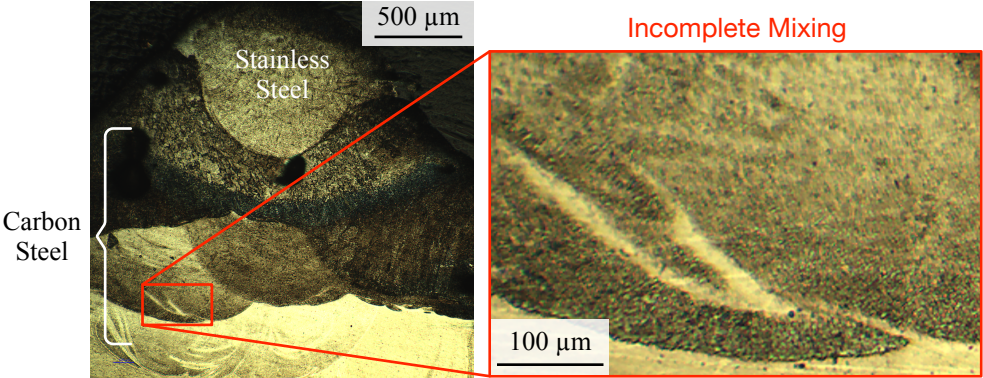
Carbon
Steel

Stainless
Steel

500 μm

Incomplete Mixing

100 μm



Download English Version:

<https://daneshyari.com/en/article/7875621>

Download Persian Version:

<https://daneshyari.com/article/7875621>

[Daneshyari.com](https://daneshyari.com)