

Accepted Manuscript

Surface energies, segregation, and fracture behavior of magnesium aluminate spinel low-index grain boundary planes

Fiona Yuwei Cui, Animesh Kundu, Amanda Krause, Martin P. Harmer, Richard P. Vinci



PII: S1359-6454(18)30070-3

DOI: [10.1016/j.actamat.2018.01.039](https://doi.org/10.1016/j.actamat.2018.01.039)

Reference: AM 14333

To appear in: *Acta Materialia*

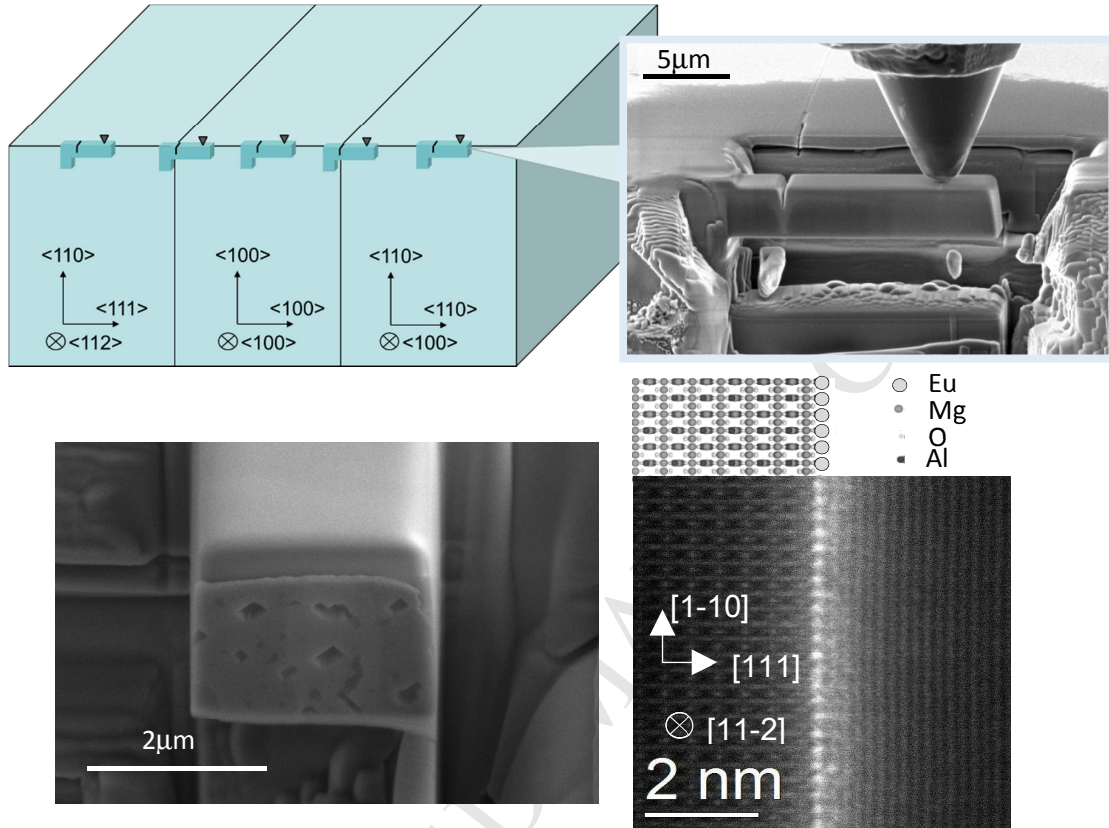
Received Date: 7 September 2017

Revised Date: 22 December 2017

Accepted Date: 18 January 2018

Please cite this article as: F.Y. Cui, A. Kundu, A. Krause, M.P. Harmer, R.P. Vinci, Surface energies, segregation, and fracture behavior of magnesium aluminate spinel low-index grain boundary planes, *Acta Materialia* (2018), doi: 10.1016/j.actamat.2018.01.039.

This is a PDF file of an unedited manuscript that has been accepted for publication. As a service to our customers we are providing this early version of the manuscript. The manuscript will undergo copyediting, typesetting, and review of the resulting proof before it is published in its final form. Please note that during the production process errors may be discovered which could affect the content, and all legal disclaimers that apply to the journal pertain.



Download English Version:

<https://daneshyari.com/en/article/7876485>

Download Persian Version:

<https://daneshyari.com/article/7876485>

[Daneshyari.com](https://daneshyari.com)