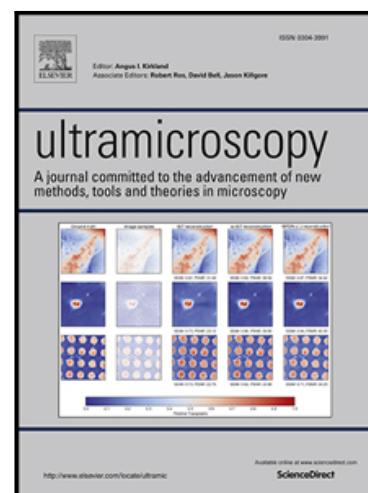


Accepted Manuscript

Improved Twin Detection via Tracking of Individual Kikuchi Band Intensity of EBSD Patterns

Travis M. Rampton , Stuart I. Wright , Michael P. Miles ,
Eric R. Homer , Robert H. Wagoner , David T. Fullwood

PII: S0304-3991(17)30269-3
DOI: [10.1016/j.ultramic.2017.11.003](https://doi.org/10.1016/j.ultramic.2017.11.003)
Reference: ULTRAM 12483



To appear in: *Ultramicroscopy*

Received date: 2 June 2017
Revised date: 26 October 2017
Accepted date: 8 November 2017

Please cite this article as: Travis M. Rampton , Stuart I. Wright , Michael P. Miles , Eric R. Homer , Robert H. Wagoner , David T. Fullwood , Improved Twin Detection via Tracking of Individual Kikuchi Band Intensity of EBSD Patterns, *Ultramicroscopy* (2017), doi: [10.1016/j.ultramic.2017.11.003](https://doi.org/10.1016/j.ultramic.2017.11.003)

This is a PDF file of an unedited manuscript that has been accepted for publication. As a service to our customers we are providing this early version of the manuscript. The manuscript will undergo copyediting, typesetting, and review of the resulting proof before it is published in its final form. Please note that during the production process errors may be discovered which could affect the content, and all legal disclaimers that apply to the journal pertain.

Highlights

- Intensities of individual EBSD bands are tracked to uncover thin twins
- Twin detection improves by 100% in Mg, and suggestions are made for further improvement
- The method is applied to twins in Inconel, tantalum and magnesium

Download English Version:

<https://daneshyari.com/en/article/8037758>

Download Persian Version:

<https://daneshyari.com/article/8037758>

[Daneshyari.com](https://daneshyari.com)