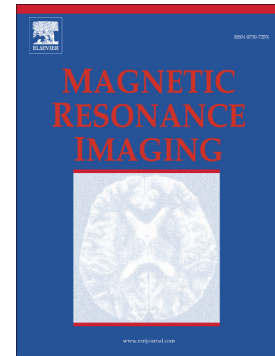


Accepted Manuscript

7.0 tesla high resolution MRI study on intracerebral migration of magnet-labeled neural stem cells in a mouse model of Alzheimer's disease

Fan Zhang, Shuang-Qing Chen, Ming-Min Tong, Pei-Jun Wang, Gao-Jun Teng



PII: S0730-725X(18)30386-2
DOI: doi:[10.1016/j.mri.2018.08.005](https://doi.org/10.1016/j.mri.2018.08.005)
Reference: MRI 9017

To appear in: *Magnetic Resonance Imaging*

Received date: 6 April 2018
Revised date: 12 August 2018
Accepted date: 14 August 2018

Please cite this article as: Fan Zhang, Shuang-Qing Chen, Ming-Min Tong, Pei-Jun Wang, Gao-Jun Teng , 7.0 tesla high resolution MRI study on intracerebral migration of magnet-labeled neural stem cells in a mouse model of Alzheimer's disease. *Mri* (2018), doi:[10.1016/j.mri.2018.08.005](https://doi.org/10.1016/j.mri.2018.08.005)

This is a PDF file of an unedited manuscript that has been accepted for publication. As a service to our customers we are providing this early version of the manuscript. The manuscript will undergo copyediting, typesetting, and review of the resulting proof before it is published in its final form. Please note that during the production process errors may be discovered which could affect the content, and all legal disclaimers that apply to the journal pertain.

Title Page

Article title: 7.0 Tesla high resolution MRI study on intracerebral migration of magnet-labeled neural stem cells in a mouse model of Alzheimer's disease

Author: Fan Zhang^a, Shuang-Qing Chen^a, Ming-Min Tong^a, Pei-Jun Wang^b, Gao-Jun Teng^c

^a Department of Radiology, the Affiliated Suzhou Hospital of Nanjing Medical University, Suzhou 215001, China

^b Department of Radiology, the Affiliated Tongji Hospital of Tongji University, Shanghai 200065, China.

^c Key Laboratory of Molecular Imaging, Southeast University, Nanjing 210009, China.

Running title: Tracking of magnet-labeled neural stem cells

Corresponding author: Shuang-Qing Chen, M.d.

Email: sznaonao@163.com

Tel: 0086-512- 62364358

Fax: 0086-512-62364358

Address: No.16, bai-ta-xi Road, Suzhou, Jiangsu Province, China (Department of Radiology, the Affiliated Suzhou Hospital of Nanjing Medical University, Suzhou 215001, China)

Download English Version:

<https://daneshyari.com/en/article/8159693>

Download Persian Version:

<https://daneshyari.com/article/8159693>

[Daneshyari.com](https://daneshyari.com)