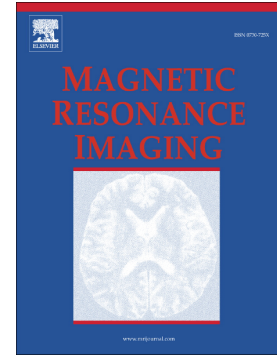


## Accepted Manuscript

Quantitative analysis of peri-tumor fat in different molecular subtypes of breast cancer

Jeon-Hor Chen, Yang Zhang, Siwa Chan, Ruey-Feng Chang, Min-Ying Su



PII: S0730-725X(18)30109-7  
DOI: doi:[10.1016/j.mri.2018.06.019](https://doi.org/10.1016/j.mri.2018.06.019)  
Reference: MRI 8992  
To appear in: *Magnetic Resonance Imaging*  
Received date: 3 May 2018  
Revised date: 13 June 2018  
Accepted date: 28 June 2018

Please cite this article as: Jeon-Hor Chen, Yang Zhang, Siwa Chan, Ruey-Feng Chang, Min-Ying Su , Quantitative analysis of peri-tumor fat in different molecular subtypes of breast cancer. *Mri* (2018), doi:[10.1016/j.mri.2018.06.019](https://doi.org/10.1016/j.mri.2018.06.019)

This is a PDF file of an unedited manuscript that has been accepted for publication. As a service to our customers we are providing this early version of the manuscript. The manuscript will undergo copyediting, typesetting, and review of the resulting proof before it is published in its final form. Please note that during the production process errors may be discovered which could affect the content, and all legal disclaimers that apply to the journal pertain.

## Quantitative Analysis of Peri-Tumor Fat in Different Molecular Subtypes of Breast Cancer

Jeon-Hor Chen<sup>1,2</sup>, Yang Zhang<sup>1</sup>, Siwa Chan<sup>3,4</sup>, Ruey-Feng Chang<sup>3</sup>, Min-Ying Su<sup>1</sup>

<sup>1</sup>Center For Functional Onco-Imaging of Department of Radiological Sciences, University of California, Irvine, CA, United States; <sup>2</sup>Department of Radiology, E-Da Hospital and I-Shou University, Kaohsiung, Taiwan; <sup>3</sup>Graduate Institute of Biomedical Electronics and Bioinformatics, National Taiwan University, Taipei, Taiwan; <sup>4</sup>Department of Radiology, Tzu-Chi General Hospital, Taichung, Taiwan

**Running Title:** Correlation of Peritumoral Tissue and Tumor Subtypes

\*Corresponding Author: **Jeon-Hor Chen, M.D.**

John Tu and Thomas Yuen Center for Functional Onco-Imaging, 164 Irvine Hall, University of California, Irvine, CA 92697-5020, USA

Tel: (949) 824-9327

Fax: (949) 824-3481

E-mail: jeonhc@uci.edu

### ACKNOWLEDGEMENT

This work was supported in part by NIH/NCI Grant No. R01 CA127927, R21 CA170955, and R03 CA136071.

Download English Version:

<https://daneshyari.com/en/article/8159699>

Download Persian Version:

<https://daneshyari.com/article/8159699>

[Daneshyari.com](https://daneshyari.com)