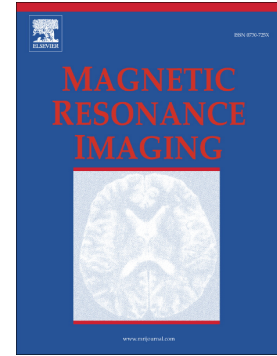


Accepted Manuscript

Relationship between transient severe motion of the liver in gadoxetic acid or iodinated contrast agent-enhanced imaging and arterial oxygen saturation and heart rate changes

Akihiko Kanki, Tsutomu Tamada, Toshinori Abe, Hiroyuki Ikenaga, Koji Yoshida, Katsuyoshi Ito



PII: S0730-725X(18)30263-7
DOI: doi:[10.1016/j.mri.2018.06.022](https://doi.org/10.1016/j.mri.2018.06.022)
Reference: MRI 8995
To appear in: *Magnetic Resonance Imaging*
Received date: 8 January 2018
Revised date: 23 June 2018
Accepted date: 28 June 2018

Please cite this article as: Akihiko Kanki, Tsutomu Tamada, Toshinori Abe, Hiroyuki Ikenaga, Koji Yoshida, Katsuyoshi Ito , Relationship between transient severe motion of the liver in gadoxetic acid or iodinated contrast agent-enhanced imaging and arterial oxygen saturation and heart rate changes. *Mri* (2018), doi:[10.1016/j.mri.2018.06.022](https://doi.org/10.1016/j.mri.2018.06.022)

This is a PDF file of an unedited manuscript that has been accepted for publication. As a service to our customers we are providing this early version of the manuscript. The manuscript will undergo copyediting, typesetting, and review of the resulting proof before it is published in its final form. Please note that during the production process errors may be discovered which could affect the content, and all legal disclaimers that apply to the journal pertain.

Relationship between transient severe motion of the liver in gadoxetic acid or iodinated contrast agent-enhanced imaging and arterial oxygen saturation and heart rate changes

Akihiko Kanki, MD, PhD*‡, Tsutomu Tamada, MD, PhD*, Toshinori Abe, RT*, Hiroyuki

Ikenaga, RT* , Koji Yoshida, RT* , Katsuyoshi Ito, MD, PhD*

Akihiko Kanki (ponbon@med.kawasaki-m.ac.jp)

Tsutomu Tamada (ttamada@med.kawasaki-m.ac.jp)

Toshinori Abe (t.abe@med.kawasaki-m.ac.jp)

Hiroyuki Ikenaga (ikechou@med.kawasaki-m.ac.jp)

Koji Yoshida (yoshida@med.kawasaki-m.ac.jp)

Katsuyoshi Ito (itokatsu@med.kawasaki-m.ac.jp)

Departments of *Radiology, Kawasaki Medical School, 577 Matsushima, Kurashiki City,

Okayama 701-0192, Japan.

*‡Corresponding author. Tel: +81 86 4621111; Fax: +81 86 4621199

E-mail: ponbon@med.kawasaki-m.ac.jp (A. Kanki)

Download English Version:

<https://daneshyari.com/en/article/8159707>

Download Persian Version:

<https://daneshyari.com/article/8159707>

[Daneshyari.com](https://daneshyari.com)