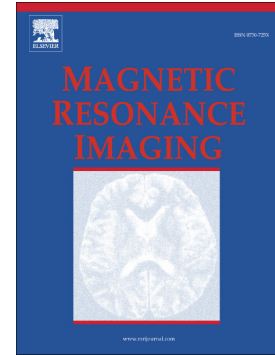


Accepted Manuscript

Scan-rescan repeatability and cross-scanner comparability of DTI metrics in healthy subjects in the SPRINT-MS multicenter trial

Xiaopeng Zhou, Ken E. Sakaie, Josef P. Debbins, Sridar Narayanan, Robert J. Fox, Mark J. Lowe



PII: S0730-725X(18)30318-7
DOI: doi:[10.1016/j.mri.2018.07.011](https://doi.org/10.1016/j.mri.2018.07.011)
Reference: MRI 9006
To appear in: *Magnetic Resonance Imaging*
Received date: 9 February 2018
Revised date: 8 June 2018
Accepted date: 21 July 2018

Please cite this article as: Xiaopeng Zhou, Ken E. Sakaie, Josef P. Debbins, Sridar Narayanan, Robert J. Fox, Mark J. Lowe , Scan-rescan repeatability and cross-scanner comparability of DTI metrics in healthy subjects in the SPRINT-MS multicenter trial. *Mri* (2018), doi:[10.1016/j.mri.2018.07.011](https://doi.org/10.1016/j.mri.2018.07.011)

This is a PDF file of an unedited manuscript that has been accepted for publication. As a service to our customers we are providing this early version of the manuscript. The manuscript will undergo copyediting, typesetting, and review of the resulting proof before it is published in its final form. Please note that during the production process errors may be discovered which could affect the content, and all legal disclaimers that apply to the journal pertain.

Scan-rescan repeatability and cross-scanner comparability of DTI metrics in healthy subjects in the SPRINT-MS multicenter trial

Xiaopeng Zhou^a, Ken E. Sakaie^b, Josef P. Debbins^c, Sridar Narayanan^{d,e}, Robert J. Fox^f, Mark J. Lowe^b

^aSchool of Health Sciences, Purdue University, 550 Stadium Mall Drive, West Lafayette, IN 47907, USA

^bImaging Institute, Cleveland Clinic, 9500 Euclid Ave, Cleveland, OH 44195, USA

^cBarrow Neurological Institute, St. Joseph's Hospital and Medical Center, 350 W Thomas Rd, Phoenix, AZ 85013, USA

^dMcConnell Brain Imaging Centre, Montreal Neurological Institute, 3801 University St. Montreal, QC, H3A2B4, Canada

^eNeuroRx Research, 3575 Avenue du Parc, Suite 5322, Montreal, QC, H2X 3P9, Canada

^fNeurological Institute, Cleveland Clinic, 9500 Euclid Ave, Cleveland, OH 44195, USA

Address correspondence to:

Mark Lowe, PhD

Imaging Institute

Cleveland Clinic

9500 Euclid Ave, U15

Cleveland, OH 44195

USA

E-mail address: lowem1@ccf.org

Phone: 216-445-2661

Fax: 216-636-2397

Download English Version:

<https://daneshyari.com/en/article/8159713>

Download Persian Version:

<https://daneshyari.com/article/8159713>

[Daneshyari.com](https://daneshyari.com)