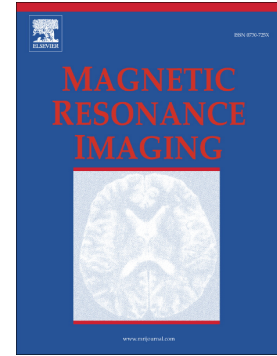


## Accepted Manuscript

Alterations in apparent diffusion coefficient values of the kidney during the cardiac cycle: Evaluation with ECG-triggered diffusion-weighted MR imaging

Katsuyoshi Ito, Minoru Hayashida, Akihiko Kanki, Akira Yamamoto, Tsutomu Tamada, Koji Yoshida, Masahiro Tanabe



PII: S0730-725X(18)30134-6  
DOI: doi:[10.1016/j.mri.2018.05.004](https://doi.org/10.1016/j.mri.2018.05.004)  
Reference: MRI 8962

To appear in:

Received date: 28 November 2017  
Revised date: 4 April 2018  
Accepted date: 13 May 2018

Please cite this article as: Katsuyoshi Ito, Minoru Hayashida, Akihiko Kanki, Akira Yamamoto, Tsutomu Tamada, Koji Yoshida, Masahiro Tanabe , Alterations in apparent diffusion coefficient values of the kidney during the cardiac cycle: Evaluation with ECG-triggered diffusion-weighted MR imaging. The address for the corresponding author was captured as affiliation for all authors. Please check if appropriate. *Mri*(2017), doi:[10.1016/j.mri.2018.05.004](https://doi.org/10.1016/j.mri.2018.05.004)

This is a PDF file of an unedited manuscript that has been accepted for publication. As a service to our customers we are providing this early version of the manuscript. The manuscript will undergo copyediting, typesetting, and review of the resulting proof before it is published in its final form. Please note that during the production process errors may be discovered which could affect the content, and all legal disclaimers that apply to the journal pertain.

Alterations in Apparent Diffusion Coefficient Values of the Kidney during the Cardiac Cycle: Evaluation with ECG-triggered Diffusion-Weighted MR Imaging

Katsuyoshi Ito, M.D.<sup>1), 2)</sup>

Minoru Hayashida, M.D.<sup>2)</sup>

Akihiko Kanki, M.D.<sup>2)</sup>

Akira Yamamoto, M.D.<sup>2)</sup>

Tsutomu Tamada, M.D.<sup>2)</sup>

Koji Yoshida, R.T.<sup>2)</sup>

Masahiro Tanabe, M.D.<sup>1)</sup>

<sup>1)</sup> Department of Radiology, Yamaguchi University Graduate School of Medicine  
1-1-1 Minami-kogushi, Ube, Yamaguchi 755-8505 Japan

<sup>2)</sup> Department of Diagnostic Radiology, Kawasaki Medical School  
577 Matsushima, Kurashiki, Okayama 701-0192 JAPAN

Address for correspondence:

Katsuyoshi Ito, M.D.

Department of Radiology

Yamaguchi University Graduate School of Medicine

1-1-1 Minami-kogushi

Ube, Yamaguchi 755-8505 JAPAN

Telephone number: +81-836-22-2282

FAX number: +81-836-22-2285

email: itokatsu@yamaguchi-u.ac.jp

Address reprint requests to Katsuyoshi Ito, MD

Running title: ADC of Kidney during the Cardiac Cycle

Download English Version:

<https://daneshyari.com/en/article/8159730>

Download Persian Version:

<https://daneshyari.com/article/8159730>

[Daneshyari.com](https://daneshyari.com)